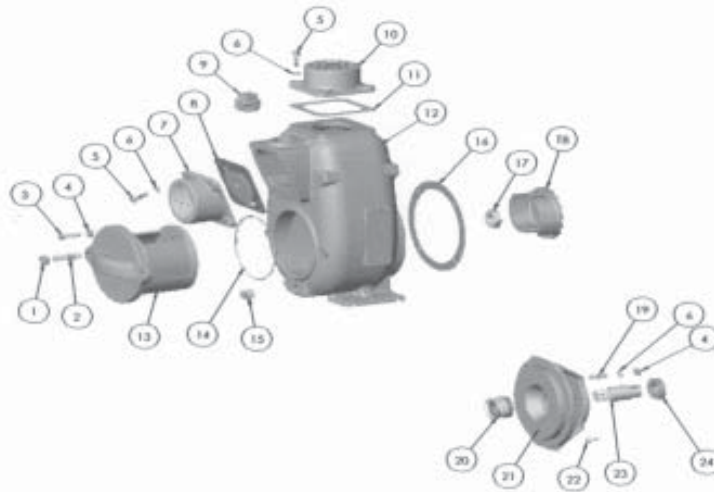


MP PUMPS SERVICE PARTS LIST

2CT Pumpak. 2" x 2" and 3" x 3"

Pumpak



PART NO.	ITEM NO.	DESCRIPTION	QTY.	PART NO.	ITEM NO.	DESCRIPTION	QTY.
41553	1	HEXNUT - 1/2-13	2	* 40815	16	GASKET - 145TC	1
41449	2	STUD - 1/2-13 X 2.25"	2	* 44175	16	GASKET - 184 / 215TC	1
43926	3	SET SCREW - 3/8 -16 X 1.5"	3	* 22417	17	HEX JAMNUT S.S. - 145TC	1
21268	4	HEXNUT S.S. - 3/8-16	7	* 29194	17	HEX JAMNUT S.S. - 184 / 215TC	1
21251	5	CAP SCREW S.S. - 3/8-16 X .875"	8	40015	18	IMPELLER - 5.82" for 145TC	1
21291	5	CAP SCREW S.S. - 3/8-16 X 1.13"	8	44172	18	IMPELLER - 5.88" for 184 / 215TC	1
21266	6	LOCKWASHER S.S. - 3/8	12	21260	19	STUD S.S. - 3/8-16 X 1.44"	4
22369	7	FLANGE - SUCTION 2"	1	* 43908	20	MECH. SEAL - 1.25" for 145TC	1
22468	7	FLANGE - SUCTION 3"	1	* 31374	20	MECH. SEAL - 1.5" for 184/215TC	1
* 23040	8	FLAPPER ASSEMBLY	1	43910	21	ADAPTOR 145TC	1
41484	9	PIPE PLUG - 1.5" NPT	1	44174	21	ADAPTOR 184 - 215TC	1
22372	10	FLANGE - DISCHARGE 2"	1	31235	22	CAP SCREW S.S. - 1/2-13 X 3/4"	4
22471	10	FLANGE - DISCHARGE 3"	1	* 43907	23	DRIVE SLEEVE S.S. 145TC	1
* 22358	11	GASKET - DISCHARGE	1	* 31094	23	DRIVE SLEEVE S.S. 184TC	1
43903	12	VOLUTE	1	* 31311	23	DRIVE SLEEVE S.S. 215TC	1
43905	13	CLEANOUT	1	43908	24	CLAMP .875" I.D.	1
* 41187	14	O-RING	1	31099	24	CLAMP 1.375" I.D.	1
41479	15	PIPE PLUG - 1/2" NPT	1	31312	24	CLAMP 1.5" I.D.	1
				21937	N/S	SQUARE KEY 145TC ONLY	1

*- RECOMMENDED REPLACEMENT PARTS



MP PUMPS, INC.

34800 BENNETT • FRASER, MI 48026-1686
 (586) 293-8240 • FAX (586) 293-8469
 (800) 563-8006 • www.mppumps.com

Form 7091-A