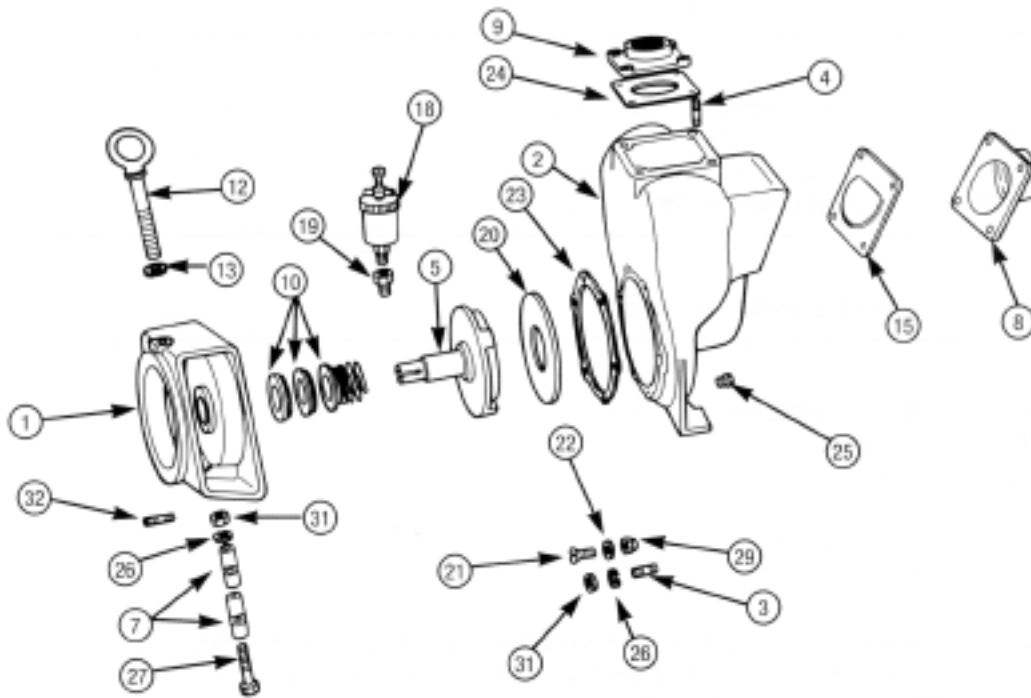


MP PUMPS SERVICE PARTS LIST

- Self-Priming
- Engine Drive

- Pumpak
- Wisconsin 12 HP

FLOMAX 10 2" x 2" Pipe Size
FLOMAX 15 3" x 3" Pipe Size



IMPORTANT: When ordering parts, specify model and serial number shown on nameplate.
 N/S means not shown in exploded view of parts.

ITEM	PART NO.	DESCRIPTION	QUANTITY REQUIRED PER MODEL
------	----------	-------------	-----------------------------

HOUSING

	23035	Housing Assembly — Cast Iron — Inc:	1
2	22351	Housing — Cast Iron	1
3	21260	Stud — S.S. — Adaptor to Housing — 3/8"	6
4	21261	Stud — Inlet and Outlet — 3/8"	8
N/S	22379	Pipe Plug — Cast Iron — 1" NPT	1
25	21267	Drain Plug — 1/4" NPT	1
31	21268	Hex Nut — S.S. — 3/8"	16
		2 — Frame to Housing	
		6 — Adaptor to Housing	
		4 — Inlet Flange	
		4 — Outlet Flange	
26	21266	Lockwasher — S.S. — 3/8"	16
		2 — Frame to Housing	
		6 — Adaptor to Housing	
		4 — Inlet Flange	
		4 — Outlet Flange	
15	23040	Flapper Assembly	1
23	24918	Gasket — Housing to Adaptor	1
24	22358	Gasket — Outlet Flange	1



MP PUMPS, INC.

34800 BENNETT • FRASER, MI 48026-1686
 (586) 293-8240 • FAX (586) 293-8469
 (800) 563-8006 • www.mppumps.com

FORM 7041-B

PRINTED IN U.S.A. (9-95)

ITEM	PART NO.	DESCRIPTION	QUANTITY REQUIRED PER MODEL
FLANGE			
8	22369	Flange — Inlet — Cast Iron — 2"	1
8	22468	Flange — Inlet — Cast Iron — 3"	1
9	22372	Flange — Outlet — Cast Iron — 2"	1
9	22471	Flange — Outlet — Cast Iron — 3"	1
WEAR PLATE			
	22376	Wear Plate Assembly — Steel — Inc:	1
20	22244	Wear Plate — Steel	1
21	21262	Flat Head Screw — S.S. — 3/8"	2
22	21271	Annular Gasket — 5/8"	2
IMPELLER			
5	23387	Impeller Assembly — Cast Iron	1
CLAMP			
	23039	Impeller Clamp Assembly — Inc:	1
7	22356	Clamp	2
26	21266	Lockwasher — S.S. — 3/8"	2
27	21269	Capscrew — S.S. — 3/8"	2
31	21268	Hex Nut — S.S. — 3/8"	2
SEAL			
Be sure you specify whether you want the self-lubricated seal or the grease-lubricated seal. If you are changing from a self-lubricated seal to a grease-lubricated seal, you must also order Item 18, Part 22313, and Item 19, Part 22314.			
10	22361	Seal Assembly — Self-lubricated — Inc:	1
	22365	Seal Washer — Self-lubricated — Carbon — 2 Notch	1
	22373	Seal Seat — Self-lubricated — Viton	1
*10	22395	Seal Assembly — Grease-lubricated	1
18	22313	Grease Cup	1
19	22314	Grease Cup Adaptor	1
ADAPTOR			
1	22419	Adaptor — Cast Iron	1
32	21261	Stud — S.S. — Engine to Adaptor — 3/8"	4
31	21268	Hex Nut — S.S. — 3/8"	4
26	21266	Lockwasher — S.S. — 3/8"	4
12	22460	Lifting Eye	1
13	22461	Hex Nut — Steel — 5/8"	1
BASE			
N/S	22537	Base	1
N/S	21265	Hex Nut — S.S. — Engine to Base — 3/8"	4
N/S	21259	Capscrew — S.S. — Engine to Base — 3/8"	4
N/S	21266	Lockwasher — S.S. — Engine to Base — 3/8"	4

*Optional for Special Applications



MP PUMPS, INC.

34800 BENNETT • FRASER, MI 48026-1686
(586) 293-8240 • FAX (586) 293-8469
(800) 563-8006 • www.mppumps.com

FORM 7041-B

PRINTED IN U.S.A. (9-95)