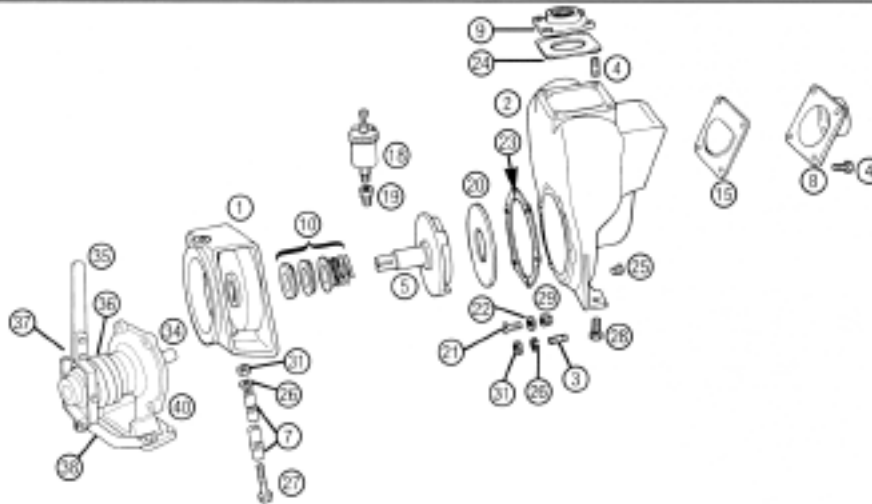


MP PUMPS SERVICE PARTS LIST

- Self-Priming
- Clutch Drive
- Mechanical Seal

FLOMAX 10 2" x 2" Pipe Size
FLOMAX 15 3" x 3" Pipe Size



IMPORTANT: When ordering parts, specify model and serial number shown on nameplate.
 N/S means not shown in exploded view of parts. UAR means Use as Required.

ITEM NO.	PART NO.	DESCRIPTION	QUANTITY REQUIRED PER MODEL			
			METAL	CAST IRON	ALUMINUM	BRONZE
			FLOMAX 10 With Std. Seal	24553		24552
FLOMAX 15 With Std. Seal	24555		24554			

HOUSING

2	23005	Housing Assembly — Cast Iron — Incl.:	1			
		Housing — Cast Iron	1			
3	21260	Stud — S.S. — 3/8" Adaptor	6			
4	21261	Stud — S.S. — 3/8" — Flanges	8			
4	21291	Capscrew S.S. 3/8" flanges used in place of 21261 stud starting in 1978 — NOT interchangeable.	8			
25	21267	Drain Plug 1/4" NPT	1			
2	23033	Housing Assembly — Aluminum — Incl.:			1	
		Housing — Aluminum				
3	21260	Stud — S.S. — 3/8" Adaptor			6	
4	21261	Stud S.S. 3/8" — flanges			8	
4	21291	Capscrew S.S. 3/8" — flanges used in place of 21261 stud starting in 1978 — NOT interchangeable.			8	
25	21267	Drain Plug 1/4" NPT			1	
2	23034	Housing Assembly — Bronze — Incl.:				1
		Housing — Bronze				1
3	21721	Stud Br. 3/8" Adaptor — Use with 21230 Hex Nut				6
4	21721	Stud Br. 3/8" — Flanges — used with 21230 Hex Nut				8
4	21291	Capscrew S.S. 3/8" — flanges used in place of 21721 starting in 1978 — NOT interchangeable. If your pump was built with studs, you must replace with studs,				8
25	21267	Drain Plug 1/4" NPT				1
26	26051	Lockwasher Br. 3/8" Adaptor & Flanges				UAR
26	21266	Lockwasher S.S. 3/8" Adaptor & Flanges	UAR		UAR	UAR
31	21268	Hex Nut S.S. Adaptor & Flanges	UAR		UAR	
31	21230	Hex Nut Br. 3/8" Adaptor & Flanges				UAR
15	23040	Flapper Assembly — standard	1		1	1
15	26100	Flapper — EPDM — optional	1		1	
23	22240	Gasket — Housing to Adaptor	1		1	1
24	22358	Gasket — Outlet Flange — standard	1		1	1
24	26101	Gasket — EPDM — Outlet Flange — Optional	1		1	



MP PUMPS, INC.

34800 BENNETT • FRASER, MI 48026-1686
 (586) 293-8240 • FAX (586) 293-8469
 (800) 563-8006 • www.mppumps.com

FORM 7057-B

PRINTED IN U.S.A. (8-97)

ITEM NO.	PART NO.	DESCRIPTION	QUANTITY REQUIRED PER MODEL			
			METAL	CAST IRON	ALUMINUM	BRONZE
			FLOWMAX 10 With Std. Seal	24553		24552
			FLOWMAX 15 With Std. Seal	24555		24554

FLANGE

8	22369	Flange — Inlet — Cast Iron — 2"	1		
8	22367	Flange — Inlet — Aluminum — 2"		1	
8	22368	Flange — Inlet — Bronze — 2"			
8	22468	Flange — Inlet — Cast Iron — 3"	1		
8	22466	Flange — Inlet — Aluminum — 3"		1	
8	22467	Flange — Inlet — Bronze — 3"			1
9	22372	Flange — Outlet — Cast Iron — 2"	1		
9	22370	Flange — Outlet — Aluminum — 2"		1	
9	22371	Flange — Outlet — Bronze — 2"			1
9	22471	Flange — Outlet — Cast Iron — 3"	1		
9	22469	Flange — Outlet — Aluminum — 3"		1	
9	22470	Flange — Outlet — Bronze — 3"			1

WEAR PLATE

20	22376	Wear Plate Assembly — Steel — Incl.:	1		
		Wear Plate — Steel	1		
21	21262	Flat Head Screw — S.S. — 3/8"	2		
22	21271	Annular Gasket — 5/8"	2		
20	22374	Wear Plate Assembly — Aluminum — Incl.:		1	
		Wear Plate — Aluminum		1	
21	21262	Flat Head Screw — S.S. — 3/8"		2	
22	21271	Annular Gasket — 5/8"		2	
20	22375	Wear Plate Assembly — Brass — Incl.:			1
		Wear Plate — Brass			1
21	22360	Flat Head Screw — Brass — 3/8"			2
22	21271	Annular Gasket			2
29	21263	Acorn Nut — S.S. — 3/8"	2	2	
29	26053	Acorn Nut — Brass — 3/8"			2

IMPELLER

5	23038	Impeller Assembly — Cast Iron	1		
5	23036	Impeller Assembly — Aluminum		1	
5	23037	Impeller Assembly — Bronze			1
5	23902	Impeller Assembly — S.S. — Optional	1	1	

CLAMP

7	23039	Impeller Clamp Assembly — Incl.:	1	1	1
		Clamp	2	2	2
26	21266	Lockwasher — S.S. — 3/8"	2	2	2
27	21269	Capscrew — S.S. — 3/8"	2	2	2
31	21268	Hex Nut — S.S. — 3/8"	2	2	2

SEAL

Be sure you specify whether you want the self-lubricated seal or the grease-lubricated seal.

10	22361	Seal Assembly — Self-lubricated	1	1	1
10	22395	Seal Assembly — Grease-lubricated	1	1	
18	22313	Grease Cup	1	1	
19	22314	Grease Cup Adaptor	1	1	

ADAPTOR

1	22348	Adaptor — Cast Iron — Std. Seal	1		
1	22346	Adaptor — Aluminum — Std. Seal		1	
1	22347	Adaptor — Bronze — Std. Seal			1
1	24871	Adaptor — Cast Iron — For Grease Seal	1		
1	24870	Adaptor — Aluminum — For Grease Seal		1	

CLUTCH & PEDESTAL ASSEMBLY

40 & 36	24463	Clutch & Pedestal Assy. Incl.:	1	1	1
40	26164	Pedestal Assy. — Incl.:	1	1	1
N/S	26161	Pedestal Body — Cast Iron	1	1	1
N/S	22425	Woodruff Key #15	1	1	1
34	26162	Shaft	1	1	1
N/S	22035	Snap Ring	2	2	2
N/S	25474	Ball Bearing	2	2	2
N/S	21274	Capscrew — S.S. — 3/8"	4	4	4
N/S	21266	Lockwasher — S.S. — 3/8"	4	4	4
36	24436	Clutch Assembly — Incl.:	1	1	1
35	24431	Handle	1	1	1
37	24430	Yoke	2	2	2
N/S	24427	Clutch Only	1	1	1
38	24429	Bracket — Right	1	1	1
N/S	24428	Bracket — Left	1	1	1
N/S	21192	Lockwasher	3	3	3
N/S	21241	Hex Nut — S.S. — 1/4" — 20	3	3	3
N/S	21247	Screw — S.S. — 1/4" — 20	3	3	3

*Optional for Special Applications / N/S — Not Shown



MP PUMPS, INC.

34800 BENNETT • FRASER, MI 48026-1686
 (586) 293-8240 • FAX (586) 293-8469
 (800) 563-8006 • www.mppumps.com

FORM 7057-B

PRINTED IN U.S.A. (8-97)