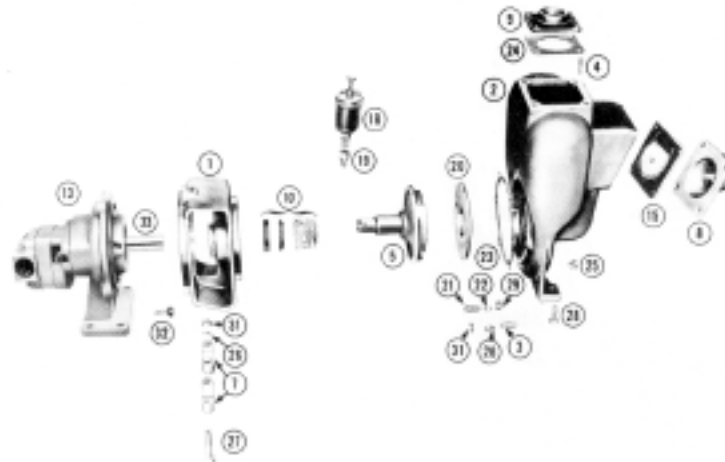


MP PUMPS SERVICE PARTS LIST

- Pedestal Mounted • Hydraulic Motor Drive
- Self-Priming • Mechanical Seal

FLOMAX 10 2" x 2" Pipe Size

FLOMAX 15 3" x 3" Pipe Size



IMPORTANT: When ordering parts, be sure to specify model and serial number. N/S means not shown on exploded view of parts.

ITEM	PART NO.	DESCRIPTION	QUANTITY REQUIRED PER MODEL		
			CAST IRON	ALUMINUM	BRONZE
			FLOMAX	10-15	10-15

HOUSING

	23035	Housing Assembly — Cast Iron — Inc:			
2		Housing — Cast Iron	1		
3	21260	Stud — S.S. — 3/8" — Adaptor	6		
4	21291	Cap screw — S.S. — 3/8" — Inlet and Outlet	8		
25	21267	Drain Plug — 1/4" NPT	1		
	23033	Housing Assembly — Aluminum — Inc:		1	
2		Housing — Aluminum		1	
3	21260	Stud — S.S. — 3/8" — Adaptor		6	
4	21291	Cap screw — S.S. — 3/8" — Inlet and Outlet		8	
25	21267	Drain Plug — 1/4" NPT		1	
	23034	Housing Assembly — Bronze — Inc:			1
2		Housing — Bronze			1
3	21721	Stud — Bronze 3/8" — Adaptor			6
4	21291	Cap screw — Bronze 3/8" — Inlet and Outlet			8
25	21186	Drain Plug — Bronze — 1/4" NPT			1
26	26051	Lockwasher — Bronze — 3/8"			6
26	21266	Lockwasher — S.S. — 3/8"	14	14	8
		6 — Adaptor to Housing			
		4 — Inlet Flange			4
		4 — Outlet Flange			4
31	21230	Hex Nut Bronze 3/8"			6
31	21268	Hex Nut S.S. — 3/8"	6	6	
		6 — Adaptor to Housing			
15	23040	Flapper Assembly	1	1	1
23	22240	Gasket — Housing to Adaptor	4	4	4
24	22358	Gasket — Outlet Flange	1	1	1



MP PUMPS, INC.

34800 BENNETT • FRASER, MI 48026-1686
 (586) 293-8240 • FAX (586) 293-8469
 (800) 563-8006 • www.mppumps.com

FORM 7062-B

PRINTED IN U.S.A.—GB

ITEM	PART NO.	DESCRIPTION	QUANTITY REQUIRED PER MODEL			
				CAST IRON	ALUMINUM	BRONZE
			FLOMAX	10-15	10-15	10-15
FLANGE						
8	22369	Flange – Inlet – Cast Iron – 2"		1		
8	22367	Flange – Inlet – Aluminum – 2"			1	
8	22368	Flange – Inlet – Bronze – 2"				1
8	22468	Flange – Inlet – Cast Iron – 3"	1			
8	22466	Flange – Inlet – Aluminum – 3"		1		
8	22467	Flange – Inlet – Bronze – 3"				1
9	22372	Flange – Outlet – Cast Iron – 2"	1			
9	22370	Flange – Outlet – Aluminum – 2"		1		
9	22371	Flange – Outlet – Bronze – 2"				1
9	22471	Flange – Outlet – Cast Iron – 3"	1			
9	22469	Flange – Outlet – Aluminum – 3"		1		
9	22470	Flange – Outlet – Bronze – 3"				1
WEAR PLATE						
20	22376	Wear Plate Assembly – Steel – Inc:	1			
21	21262	Flat Head Screw – S.S. – 3/8"	2			
22	21271	Annular Gasket – 5/8"	2			
20	22374	Wear Plate Assembly – Aluminum – Inc:		1		
21	21262	Flat Head Screw – S.S. 3/8"		2		
22	21271	Annular Gasket – 5/8"		2		
20	22375	Wear Plate Assembly – Brass – Inc:				1
21	22360	Flat Head Screw – 3/8" – Bronze				2
22	21271	Annular Gasket – 3/8"				2
29	26053	Acorn Nut – Bronze – 3/8"				2
29	21263	Acorn Nut – S.S. – 3/8"	2	2		
IMPELLER						
5	23038	Impeller Assembly – Cast Iron	1			
5	23036	Impeller Assembly – Aluminum		1		
5	23037	Impeller Assembly – Bronze				1
5	23902	Impeller Assembly – Stainless Steel (Models 24198, 23931, 24122, 24176, 24268 and 24487)	1	1		
CLAMP						
7	23039	Impeller Clamp Assembly – Inc:	1	1		1
7	22356	Clamp	2	2		2
26	21266	Lockwasher – S.S. – 3/8"	2	2		2
27	21269	Capscrew – S.S. – 3/8"	2	2		2
31	21268	Hex Nut – S.S. – 3/8"	2	2		2
SEAL						
10	22395	Seal – Grease lubricated (optional)				
10	22361	Seal Assembly – Self-Lubricated (standard)	1	1		1
18	22313	Grease Cup (optional)	1	1		
19	22314	Grease Cup Adaptor (optional)	1	1		
ADAPTOR						
1	22348	Adaptor – Cast Iron – (Self-Lubricated Seal)	1			
1	22346	Adaptor – Aluminum – (Self-Lubricated Seal)		1		
1	22347	Adaptor – Bronze – (Self-Lubricated Seal)				1
1	24871	Adaptor – Cast Iron – (Grease Seal Only)	1			
1	24870	Adaptor – Aluminum – (Grease Seal Only)		1		
HYDRAULIC PEDESTAL ASSEMBLY						
	28551	Hydraulic Pedestal Assy includes:	1	1		1
13	28544	Hydraulic Motor	1	1		1
33	25772	Pedestal only	1	1		1
26	21266	Lockwasher S.S. 3/8"	6	6		6
32	21274	Capscrew S.S. 3/8"	6	6		6



MP PUMPS, INC.

34800 BENNETT • FRASER, MI 48026-1686
(586) 293-8240 • FAX (586) 293-8469
(800) 563-8006 • www.mppumps.com

FORM 7062-B

PRINTED IN U.S.A.—GB