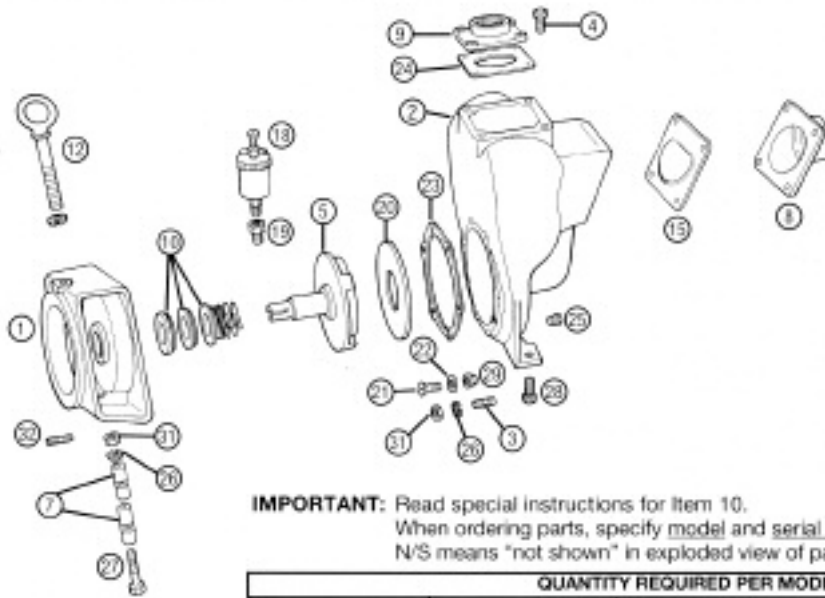


MP PUMPS SERVICE PARTS LIST

- Self-priming
- Engine Drive
- Tecumseh 8 HP

FLOMAX 10 2" x 2" Pipe Size
FLOMAX 15 3" x 3" Pipe Size



IMPORTANT: Read special instructions for Item 10.
 When ordering parts, specify model and serial number shown on nameplate.
 N/S means "not shown" in exploded view of parts.

QUANTITY REQUIRED PER MODEL			
METAL	CAST IRON	ALUMINUM	BRONZE
FLOWMAX 10	26249	26278	26282
	26247	26277	26281
FLOWMAX 15	26252	26286	26284
	26250	26285	26283
	27076		
	27075		

ITEM NO.	PART NO.	DESCRIPTION
----------	----------	-------------

HOUSING

	23035	Housing Assembly — Cast Iron — Incl:	1		
2		Housing — Cast Iron	1		
3	21260	Stud — S.S. — Adaptor to Housing — 3/8"	6		
4	21291	Cap screw	8		
N/S	22378	Pipe Plug — Cast Iron — 1" NPT	1		
25	21267	Drain Plug — 1/4" NPT	1		
	23033	Housing Assembly — Aluminum — Incl:		1	
2		Housing — Aluminum		1	
3	21260	Stud — S.S. — Adaptor to Housing — 3/8"		6	
4	21261	Stud — S.S. — Inlet and Outlet — 3/8"		8	
N/S	22380	Pipe Plug — Aluminum — 1" NPT		1	
25	21267	Drain Plug — 1/4" NPT		1	
	23034	Housing Assembly — Bronze — Incl:			1
2		Housing — Bronze			1
3	21260	Stud — S.S. — Adaptor to Housing — 3/8"			6
4	21261	Stud — S.S. — Inlet and Outlet — 3/8"			8
N/S	22378	Pipe Plug — Bronze — 1" NPT			1
25	21267	Drain Plug — 1/4" NPT			1
31	21268	Hex Nut — S.S. — 3/8"	16	16	16
		2 — Frame to Housing			
		6 — Adaptor to Housing			
		4 — Inlet Flange			
		4 — Outlet Flange			
26	21266	Lockwasher — S.S. — 3/8"	16	16	16
		2 — Frame to Housing			
		6 — Adaptor to Housing			
		4 — Inlet Flange			
		4 — Outlet Flange			
15	23040	Flapper Assembly	1	1	1
23	22240	Gasket — Housing to Adaptor	4	4	4
24	22358	Gasket — Outlet Flange	1	1	1



MP PUMPS, INC.

34800 BENNETT • FRASER, MI 48026-1686
 (586) 293-8240 • FAX (586) 293-8469
 (800) 563-8006 • www.mppumps.com

FORM 7083-B

PRINTED IN U.S.A. (8-97)

ITEM NO.	PART NO.	DESCRIPTION	QUANTITY REQUIRED PER MODEL				
			METAL	CAST IRON	ALUMINUM	BRONZE	
			FLOWMAX 10	26249 26247	26278 26277	26282 26281	
			FLOWMAX 15	26252 26250 27076 27075	26296 26285	26284 26283	

FLANGE

8	22369	Flange — Inlet — Cast Iron — 2"	1			
8	22367	Flange — Inlet — Aluminum — 2"			1	
8	22368	Flange — Inlet — Bronze — 2"				1
8	22458	Flange — Inlet — Cast Iron — 3"	1			
8	22466	Flange — Inlet — Aluminum — 3"			1	
8	22467	Flange — Inlet — Bronze — 3"				1
9	22372	Flange — Outlet — Cast Iron — 2"	1			
9	22370	Flange — Outlet — Aluminum — 2"			1	
9	22371	Flange — Outlet — Bronze — 2"				1
9	22471	Flange — Outlet — Cast Iron — 3"	1			
9	22469	Flange — Outlet — Aluminum — 3"			1	
9	22470	Flange — Outlet — Bronze — 3"				1

WEAR PLATE

	22376	Wear Plate Assembly — Steel — Incl.:	1			
20		Wear Plate — Steel	1			
21	21262	Flat Head Screw — S.S. — 3/8"	2			
22	21271	Annular Gasket — 5/8"	2			
	22374	Wear Plate Assembly — Aluminum — Incl.:			1	
20		Wear Plate — Aluminum			1	
21	21262	Flat Head Screw — S.S. — 3/8"			2	
22	21271	Annular Gasket — 5/8"			2	
	22375	Wear Plate Assembly — Bronze — Incl.:				1
20		Wear Plate — Bronze				1
21	21262	Flat Head Screw — S.S. — 3/8"				2
22	21271	Annular Gasket — 5/8"				2
29	21263	Acorn Nut — S.S. — Wear Plate — 3/8"	2		2	2

IMPELLER

5	23038	Impeller Assembly — Cast Iron	1			
5	23036	Impeller Assembly — Aluminum			1	
5	23037	Impeller Assembly — Bronze				1
5	23902	Impeller Assembly — S.S. — Optional				

CLAMP

	23039	Impeller Clamp Assembly — Incl.:	1		1	1
7		Clamp	2		2	2
26	21266	Lockwasher — S.S. — 3/8"	2		2	2
27	21269	Capscrew — S.S. — 3/8"	2		2	2
31	21268	Hex Nut — S.S. — 3/8"	2		2	2

SEAL

Be sure you specify whether you want the **self-lubricated** seal or the **grease-lubricated** seal. If you are changing from a self-lubricated seal to a grease-lubricated seal, you must also order Item 18, Part 22313, and Item 19, Part 22134.

10	22361	Seal Assembly — Self-lubricated — Incl.:	1		1	1
*10	22395	Seal Assembly — Grease-lubricated	1		1	
18	22313	Grease Cup	1		1	
19	22134	Grease Cup Adaptor	1		1	

ADAPTOR

1	26245	Adaptor — Cast Iron	1			
1	26276	Adaptor — Aluminum			1	
1	26280	Adaptor — Bronze				1
32	21278	Capscrew (Adapter to engine)	4		4	4
N/S	21238	Lockwasher (Adapter to engine)	4		4	4
12	22460	Lifting eye (Adaptor)	1		1	1
N/S	22461	Nut (Adaptor)	1		1	1

BASE

N/S	22500	Base	1		1	1
N/S	21270	Capscrew (Housing to Base)	2		2	2
N/S	21268	Hex Nut (Housing to Base)	2		2	2
N/S	21266	Lockwasher (Housing to Base)	2		2	2
N/S	25712	Capscrew (Engine to Base)	4		4	4
N/S	21284	Hex Nut (Engine to Base)	4		4	4
N/S	21238	Lockwasher (Engine to Base)	4		4	4
N/S	26246	Block Spacer (Engine)	2		2	2

*Optional for Special Applications



MP PUMPS, INC.

34800 BENNETT • FRASER, MI 48026-1686
 (586) 293-8240 • FAX (586) 293-8469
 (800) 563-8006 • www.mppumps.com

FORM 7083-B

PRINTED IN U.S.A. 8-97