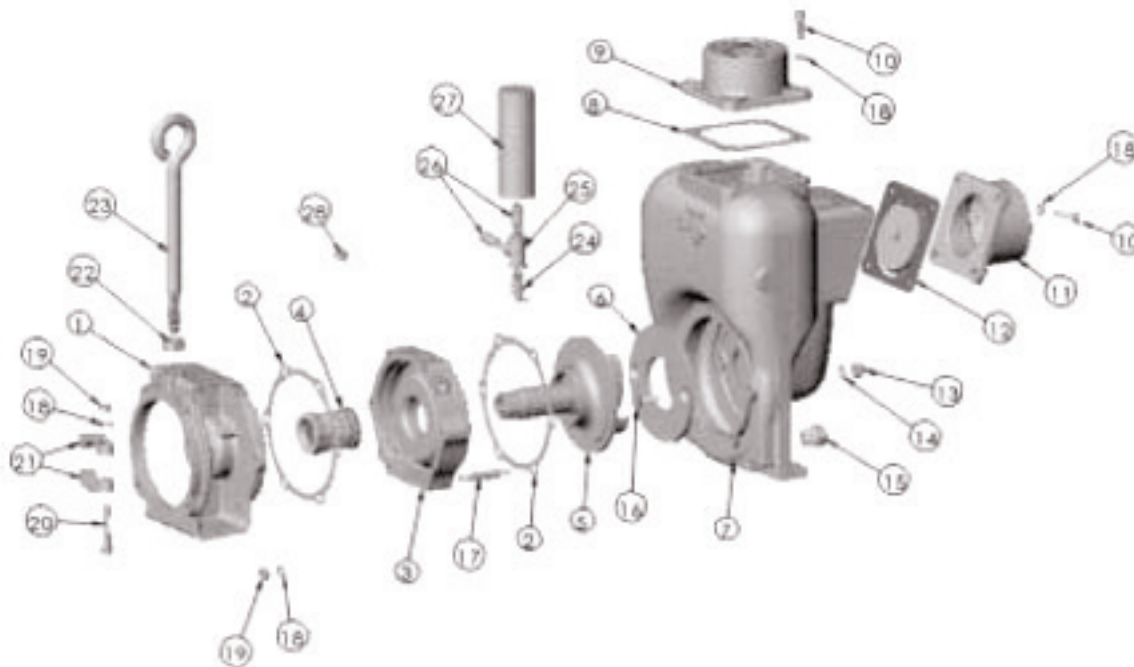


MP PUMPS SERVICE PARTS LIST

Double Seal Pumpak for Engine or
Pedestal Drive

FM15

3" x 3"



ITEM NO	PART NO	DESCRIPTION	QTY	ITEM NO	PART NO	DESCRIPTION	QTY
1	22348	ADAPTER- CAST IRON	1	17	31709	STUD S.S.- 3/8-16 X 2.76"	6
* 2	22240	GASKET	2	18	21266	LOCK WASHER- 3/8	16
3	31406	ADAPTER- DOUBLE MECH. SEAL	1	19	21268	HEX NUT- 3/8-16	8
* 4	31713	DOUBLE MECH. SEAL- SSC	1	20	21269	HEX HD. SCREW- 3/8-16	2
* 5	33299	IMPELLER - 5.0"	1	21	23039	CLAMP ASSY (INCL. 18, 19 & 20)	2
	31880	IMPELLER - 5.5"	1	22	22461	HEX NUT- 5/8-11	1
	31408	IMPELLER - 6.0"	1	23	22460	LIFT EYE- 5/8-11	1
* 6	22376	WEAR PLATE KIT (INCL. 6, 13, 14, & 16)	1	24	31733	RELIEF VALVE- 1/4" NPT	1
7	22351	HOUSING	1	25	31734	PIPE TEE- 1/4" NPT	1
* 8	22358	GASKET- DISCHARGE	1	26	28635	PIPE NIPPLE- 1/4" NPT	2
9	22471	FLANGE- DISCHARGE	1	27	31732	GREASE RESERVOIR- 1/4"	1
10	21291	CAP SCREW S.S.- 3/8-16 X 1.13"	8	28	31735	GREASE FITTING- 1/4" N	1
11	22468	FLANGE- INLET	1				
* 12	23040	FLAPPER ASS'Y	1				
* 13	21263	ACORN NUT- 3/8-16	2				
* 14	21271	ANNULAR GASKET	2				
15	41481	PIPE PLUG- 3/4" NPT	1				
* 16	21262	FLAT HD. SCREW- 3/8-16 X 1.25"	2				

* - RECOMMENDED REPLACEMENT PARTS



MP PUMPS, INC.

34800 BENNETT • FRASER, MI 48026-1686
(586) 293-8240 • FAX (586) 293-8469
(800) 563-8006 • www.mppumps.com

Form 7092-A

Rev. 05/03