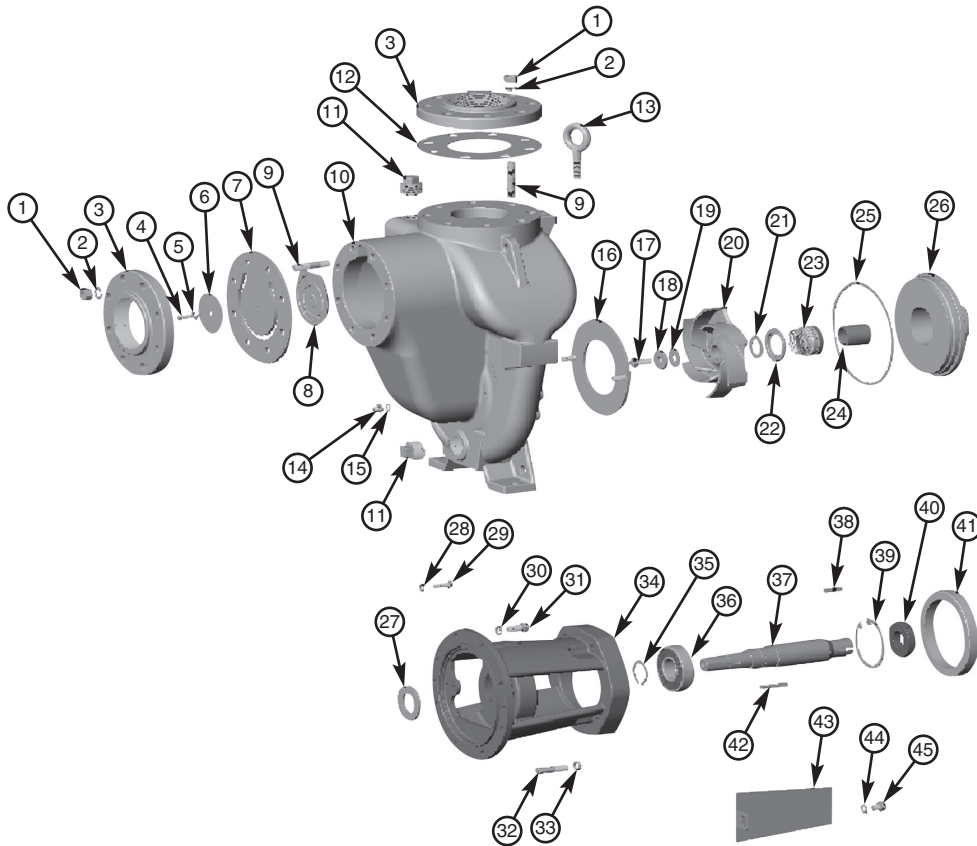


MP PUMPS SERVICE PARTS LIST

FLOMAX®40

Engine Pumpak



PART NO.	ITEM NO.	DESCRIPTION	QTY.		PART NO.	ITEM NO.	DESCRIPTION	QTY.
22461	1	HEX NUT 5/8-11	16		26996*	24	SHAFT SLEEVE	1
26258	2	LOCKWASHER 5/8	16		27758*	25	GASKET- HOUSING	1
27201	3	FLANGE INLET/OUTLET	2		26659	26	ADAPTOR- MECH. SEAL	1
21242	4	CAPSCREW 5/16-18 X 7/8"	1		26680	27	SLINGER	1
21238	5	LOCKWASHER 5/16	1		21266	28	LOCKWASHER S.S. 3/8"	2
41821	6	CHECKVALVE WEIGHT	1		21274	29	CAPSCREW S.S. 3/8-16	2
40690*	7	GASKET- CHECKVALVE	1		21254	30	LOCKWASHER S.S. 1/2"	8
40556	8	CHECKVALVE WEIGHT- UPPER	1		21246	31	CAP SCREW S.S.1/2"	10
27206	9	STUD 5/8-11 X 3"	16		41271	32	CAP SCREW	4
27190	10	HOUSING	1		21503	33	LOCKWASHER	4
27205	11	PIPE PLUG	2		31653	34	ADAPTOR- CAST IRON	1
27204*	12	GASKET- DISCHARGE	1		26690*	35	SNAP RING	1
26686	13	EYE BOLT 5/8-11 X 2.12"	1		26997	36	BALL BEARING	1
21263*	14	ACORN NUT 3/8-16	2		31654	37	SHAFT- STEEL	1
21271*	15	ANNULAR GASKET	2		41490	38	SQUARE KEY- .25"	1
27202*	16	WEAR PLATE	1		26998	39	SNAP RING	1
26674*	17	SEAL BOLT 1/2-13 X 1.25"	1		31312	40	CLAMP- 1.5"	1
26675*	18	WASHER	1		31895	41	ADAPTER RING	1
27403*	19	GASKET- RULON	1		26796	42	SQUARE KEY	1
31900*	20	IMPELLER- 6.3" DIA.	1		32054	43	GUARD	2
27404*	21	GASKET- RULON	1		24341	44	WASHER	2
26972*	22	SPRING HOLDER	1		32055	45	HEX HEAD CAPSCREW	2
26752*	23	MECH. SEAL 1.75"	1					

*-RECOMMENDED REPLACEMENT PARTS



34800 BENNETT • FRASER, MI 48026-1686
 (586) 293-8240 • FAX (586) 293-8469
 (800) 563-8006 • www.mppumps.com

Form 7079-D

03/10