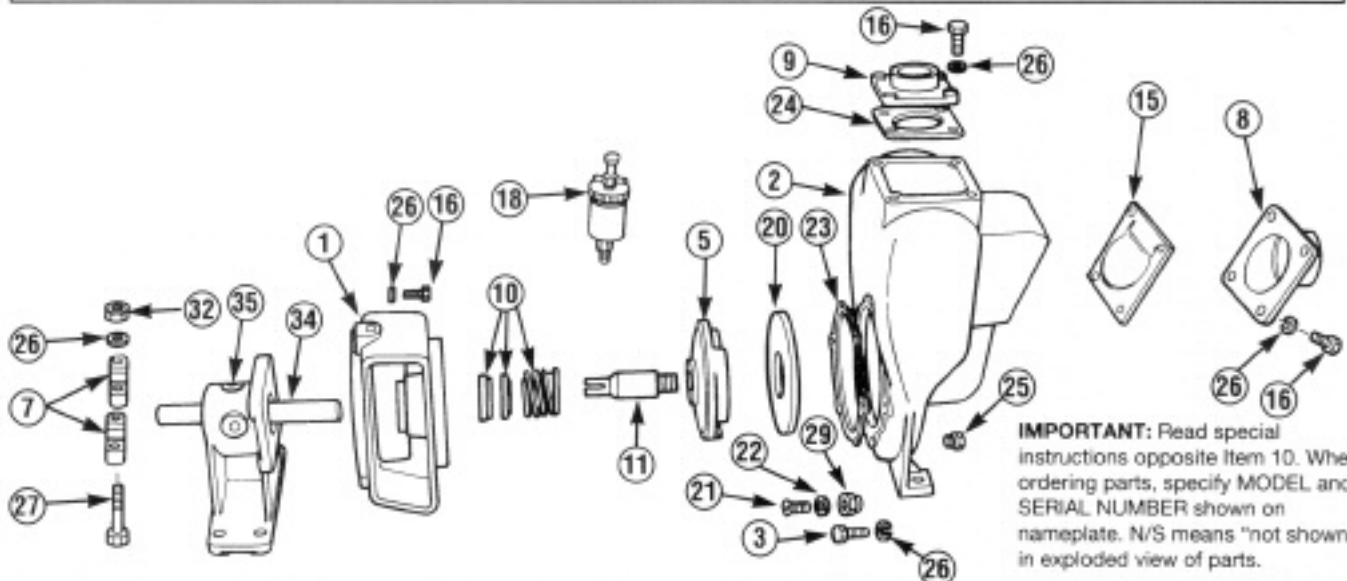


# MP PUMPS SERVICE PARTS LIST

- Self-Priming      • Pumpak
- Pedestal Mount for Belt or Direct Drive

**FLOMAX 5   1 1/2" x 1 1/2" Pipe Size**  
**FLOMAX 8   2" x 2" Pipe Size**



ITEM NO.	PART NO.	DESCRIPTION	QUANTITY REQUIRED PER MODEL							
			CAST IRON		ALUMINUM		BRONZE			
			FLOMAX	MODEL NO.	5	8	21310	21336	21311	21338
<b>ADAPTOR</b>										
1	22247	Adaptor — Cast Iron		1						
1	22245	Adaptor — Aluminum				1	1			
1	22246	Adaptor — Bronze							1	1
1	24865	Adaptor — Cast Iron — Grease Seal — Optional								
1	24007	Adaptor — Aluminum — Grease Seal — Optional								
<b>HOUSING</b>										
2	23021	Housing Assembly — Cast Iron — Inc.	1	1						
		Housing — Cast Iron	1	1						
16	21242	Capscrew — Discharge Flange	6	8						
3	24965	Capscrew S.S. 5/16" x 3/4"	6	6						
26	21238	Lockwasher	6	8						
25	21267	Pipe Plug	1	1						
2	23019	Housing Assembly — Aluminum — Inc.				1	1			
		Housing — Aluminum				1	1			
16	21242	Capscrew — Flange — Dis. & Suc.				8	8			
3	24965	Capscrew S.S. 5/16" x 3/4"				6	6			
26	21238	Lockwasher				8	8			
25	21267	Pipe Plug				1	1			
2	23020	Housing Assembly — Bronze — Inc.							1	1
		Housing — Bronze							1	1
16	21242	Capscrew — Flange — Dis. & Suc.							8	8
3	24965	Capscrew S.S. 5/16" x 3/4"							6	6
26	21238	Lockwasher							8	8
25	21267	Pipe Plug							1	1
<b>CLAMP</b>										
7	23002	Clamp Assembly — Includes:	1	1	1	1	1	1	1	1
		Clamp	2	2	2	2	2	2	2	2
27	21264	Capscrew 5/16"-18 x 1-3/4"	2	2	2	2	2	2	2	2
32	21284	Hex Nut 5/16"-18	2	2	2	2	2	2	2	2
26	21238	Lockwasher 5/16"	2	2	2	2	2	2	2	2



**MP PUMPS, INC.**

34800 BENNETT • FRASER, MI 48026-1686  
 (586) 293-8240 • FAX (586) 293-8469  
 (800) 563-8006 • www.mppumps.com

**FORM 7002-F**

PRINTED IN U.S.A. (Rev. 4-05)

# MP PUMPS SERVICE PARTS LIST

ITEM NO.	PART NO.	DESCRIPTION	QUANTITY REQUIRED PER MODEL						
			FLOMAX		ALUMINUM		BRONZE		
			MODEL NO.	5	8	5	8	5	8
			21312	21339	21310	21336	21311	21338	
<b>IMPELLER</b>									
5	22293	Impeller — Cast Iron — 5.0" Dia.		1	1				
5	24585	Impeller — Cast Iron — 4.6" Dia.							
5	25139	Impeller — Cast Iron — 4.1" Dia.							
5	22294	Impeller — Stainless Steel — (Optional)	1	1	1	1	1	1	
5	22291	Impeller — Aluminum — 5.0" Dia.			1	1			
5	22292	Impeller — Bronze — 5.0" Dia.					1	1	
36	22655	Impeller Lock Nut — S.S.	1	1	1	1	1	1	
11	22286	Drive Sleeve — S.S. 3/4" Bore	1	1	1	1	1	1	
<b>FLANGE</b>									
8	22263	Flange — Suction — Cast Iron — 1-1/2"	1						
8	22387	Flange — Suction — Cast Iron — 2"		1					
8	22261	Flange — Suction — Aluminum — 1-1/2"			1				
8	22385	Flange — Suction — Aluminum — 2"				1			
8	22262	Flange — Suction — Bronze — 1-1/2"					1		
8	22386	Flange — Suction — Bronze — 2"						1	
9	22266	Flange — Discharge — Cast Iron — 1-1/2"	1						
9	22311	Flange — Discharge — Cast Iron — 2"		1					
9	22264	Flange — Discharge — Aluminum — 1-1/2"			1				
9	22309	Flange — Discharge — Aluminum — 2"				1			
9	22265	Flange — Discharge — Bronze — 1-1/2"					1		
9	22310	Flange — Discharge — Bronze — 2"						1	
<b>SEAL</b>									
10		Be sure to specify whether you want the self-lubricated seal or the grease-lubricated seal. Seals for special applications are available. Please consult factory.							
10	22272	Seal Assembly — Self-Lubricated —	1	1	1	1	1	1	
10	22290	Seal Assembly — Grease-Lubricated	1	1	1	1	1	1	
18	22313	Grease Cup	1	1	1	1			
<b>FLAPPER</b>									
15	23022	Flapper Assembly	1	1	1	1	1	1	
15	26097	Flapper Assembly — EPDM — Optional	1	1	1	1			
<b>WEAR PLATE</b>									
20	23024	Wear Plate Assembly — Steel — Inc.:	1	1					
		Wear Plate — Steel	1	1					
21	21249	Flat Head Screw — 5/16"-18 x 1"	2	2					
22	21248	Annular Gasket	2	2					
20	22270	Wear Plate Assembly — Aluminum — Inc.:			1	1			
		Wear Plate — Aluminum			1	1			
21	21249	Flat Head Screw — 5/16"-18 x 1"			2	2			
22	21248	Annular Gasket			2	2			
20	22271	Wear Plate Assembly — Bronze — Inc.:					1	1	
		Wear Plate — Bronze					1	1	
21	21249	Flat Head Screw — 5/16"-18 x 1"					2	2	
22	21248	Annular Gasket					2	2	
<b>GASKET</b>									
23	22255	Gasket	1	1	1	1	1	1	
24	22256	Gasket — Outlet	1	1	1	1	1	1	
24	25933	Gasket — EPDM — Optional	1	1	1	1			
29	21237	Acorn Nut — 5/16"-18	2	2	2	2	2	2	
<b>PEDESTAL ASSEMBLY</b>									
34	26142	Pedestal Assembly — Inc.:	1	1	1	1	1	1	
34	26140	Pedestal Body	1	1	1	1	1	1	
35	22321	Woodruff Key #11	1	1	1	1	1	1	
16	21242	Capscrew 5/16"-18 x 7/8"	4	4	4	4	4	4	
26	21238	Lockwasher S.S. 5/16"	4	4	4	4	4	4	
N/S	26085	Shaft	1	1	1	1	1	1	
N/S	22300	Ball Bearing	2	2	2	2	2	2	
N/S	21695	Snap Ring	1	1	1	1	1	1	

N/S — NOT SHOWN



## MP PUMPS, INC.

34800 BENNETT • FRASER, MI 48026-1686  
 (586) 293-8240 • FAX (586) 293-8469  
 (800) 563-8006 • www.mppumps.com

## FORM 7002-F

PRINTED IN U.S.A. (Rev. 4-05)