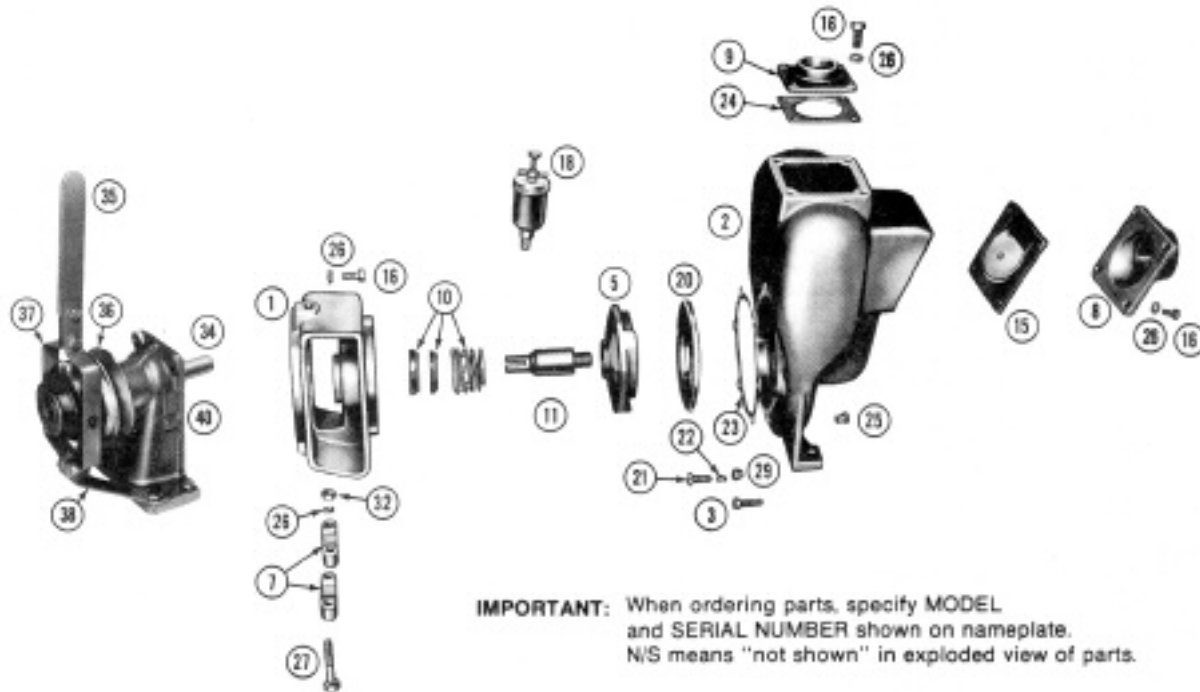


# MP PUMPS SERVICE PARTS LIST

- Self-Priming
- Pumpak
- Clutch Drive

**Flomax 5 1½" x 1½" Pipe Size**  
**Flomax 8 2" x 2" Pipe Size**



**IMPORTANT:** When ordering parts, specify MODEL and SERIAL NUMBER shown on nameplate. N/S means "not shown" in exploded view of parts.

ITEM	PART NO.	DESCRIPTION	QUANTITY REQUIRED PER MODEL					
			CAST IRON		ALUMINUM		BRONZE	
			5	8	5	8	5	8
MODEL NO.			24549	24551	24548	24550		
<b>HOUSING</b>								
2	23021	Housing Assembly — Cast Iron — Inc.	1	1				
		Housing — Cast Iron	1	1				
16	21242	Capscrew — Discharge Flange	8	8				
3	24965	Capscrew S.S. 5/16" x 3/4"	6	6				
26	21238	Lockwasher	8	8				
25	21267	Pipe Plug	1	1				
2	23019	Housing Assembly — Aluminum — Inc.			1	1		
		Housing — Aluminum			1	1		
16	21242	Capscrew — Flange — Dis. & Suc.			8	8		
3	24965	Capscrew S.S. 5/16" x 3/4"			6	6		
26	21238	Lockwasher			8	8		
25	21267	Pipe Plug			1	1		
2	23020	Housing Assembly — Bronze — Inc.					1	1
		Housing — Bronze					1	1
16	21242	Capscrew — Flange — Dis. & Suc.					8	8
3	24965	Capscrew S.S. 5/16" x 3/4"					6	6
26	21238	Lockwasher					8	8
25	21267	Pipe Plug					1	1
<b>ADAPTOR</b>								
1	22247	Adaptor — Cast Iron	1	1				
1	22245	Adaptor — Aluminum			1	1		
1	22246	Adaptor — Bronze					1	1
1	24865	Adaptor — Cast Iron — Grease Seal	1	1				
1	24007	Adaptor — Aluminum — Grease Seal			1	1		
<b>IMPELLER</b>								
5	22293	Impeller — Cast Iron	1	1				
5	22294	Impeller — Stainless Steel — Optional	1	1			1	1
5	22291	Impeller — Aluminum			1	1		
5	22292	Impeller — Bronze					1	1
N/S	22655	Impeller Lock Nut — Stainless Steel	1	1	1	1	1	1



**MP PUMPS, INC.**

34800 BENNETT • FRASER, MI 48026-1686  
 (586) 293-8240 • FAX (586) 293-8469  
 (800) 563-8006 • www.mppumps.com

**FORM 7054-C**

PRINTED IN U.S.A.

ITEM	PART NO.	DESCRIPTION	QUANTITY REQUIRED PER MODEL						
			FLOMAX MODEL NO.	CAST IRON		ALUMINUM		BRONZE	
				5	8	5	8	5	8
			24548	24551			24548	24550	
<b>CLAMP</b>									
7	23002	Clamp Assembly — Includes:	1	1	1	1	1	1	
		Clamp	2	2	2	2	2	2	
27	21264	Capscrew 5/16"-18 x 1-3/4"	2	2	2	2	2	2	
32	21284	Hex Nut 5/16"-18	2	2	2	2	2	2	
26	21238	Lockwasher 5/16"	2	2	2	2	2	2	
<b>FLANGE</b>									
8	22263	Flange — Inlet — Cast Iron — 1-1/2"	1						
8	22387	Flange — Inlet — Cast Iron — 2"		1					
8	22261	Flange — Inlet — Aluminum — 1-1/2"			1				
8	22385	Flange — Inlet — Aluminum — 2"				1			
8	22262	Flange — Inlet — Bronze — 1-1/2"					1		
8	22386	Flange — Inlet — Bronze — 2"						1	
9	22266	Flange — Outlet — Cast Iron — 1-1/2"	1						
9	22311	Flange — Outlet — Cast Iron — 2"		1					
9	22264	Flange — Outlet — Aluminum — 1-1/2"			1				
9	22309	Flange — Outlet — Aluminum — 2"				1			
9	22265	Flange — Outlet — Bronze — 1-1/2"					1		
9	22310	Flange — Outlet — Bronze — 2"						1	
<b>SEAL</b>									
10		Be sure you specify whether you want the self-lubricated seal or the grease-lubricated seal. Seals for special applications are available as listed in the "Accessories" section of our catalog.							
10	22272	Seal Assembly — Self-Lubricated —	1	1	1	1	1	1	
10	22290	Seal Assembly — Grease-Lubricated	1	1	1	1			
18	22313	Grease Cup	1	1	1	1			
11	22286	Drive Sleeve — Stainless Steel 3/4" Bore	1	1	1	1	1	1	
<b>FLAPPER</b>									
15	23022	Flapper Assembly	1	1	1	1	1	1	
15	26097	Flapper Assembly — EPDM — Optional	1	1	1	1			
<b>WEAR PLATE</b>									
20	23024	Wear Plate Assembly — Steel — Inc.:	1	1					
		Wear Plate — Steel	1	1					
21	21249	Flat Head Screw — 5/16"-18 x 1"	2	2					
22	21248	Annular Gasket	2	2					
20	22270	Wear Plate Assembly — Aluminum — Inc.:			1	1			
		Wear Plate — Aluminum			1	1			
21	21249	Flat Head Screw — 5/16"-18 x 1"			2	2			
22	21248	Annular Gasket			2	2			
20	22271	Wear Plate Assembly — Bronze — Inc.:					1	1	
		Wear Plate — Bronze					1	1	
21	21249	Flat Head Screw — 5/16"-18 x 1"					2	2	
22	21248	Annular Gasket					2	2	
<b>GASKET</b>									
23	22255	Gasket	1	1	1	1	1	1	
24	22256	Gasket — Outlet	1	1	1	1	1	1	
24	25933	Gasket — EPDM — Optional	1	1	1	1			
29	21237	Acorn Nut — 5/16"-18	2	2	2	2	2	2	
<b>CLUTCH AND PEDESTAL ASSEMBLY</b>									
40 & 36	24462	Clutch & Pedestal Assembly Inc.:	1	1	1	1	1	1	
40	26290	Pedestal Assembly — Inc.:	1	1	1	1	1	1	
34	26288	Shaft	1	1	1	1	1	1	
16	21242	Capscrew S.S. 5/16"-18 x 7/8"	4	4	4	4	4	4	
26	21238	Lockwasher S.S. 5/16"	4	4	4	4	4	4	
N/S	22300	Ball Bearing	2	2	2	2	2	2	
N/S	22321	Woodruff Key #11	1	1	1	1	1	1	
N/S	21695	Snap Ring	1	1	1	1	1	1	
N/S	26140	Pedestal Body	1	1	1	1	1	1	
36	24435	Clutch Assembly — Inc.:	1	1	1	1	1	1	
35	24431	Handle	1	1	1	1	1	1	
37	24430	Yoke	2	2	2	2	2	2	
N/S	24432	Clutch Only	1	1	1	1	1	1	
38	24434	Bracket — Right	1	1	1	1	1	1	
N/S	24433	Bracket — Left	1	1	1	1	1	1	
N/S	21192	Lockwasher	3	3	3	3	3	3	
N/S	21241	Hex Nut S.S. 1/4"-20	3	3	3	3	3	3	
N/S	21247	Screw S.S. 1/4"-20	3	3	3	3	3	3	

N/S — NOT SHOWN



**MP PUMPS, INC.**

34800 BENNETT • FRASER, MI 48026-1686  
 (586) 293-8240 • FAX (586) 293-8469  
 (800) 563-8006 • www.mppumps.com

**FORM 7054-C**

PRINTED IN U.S.A.