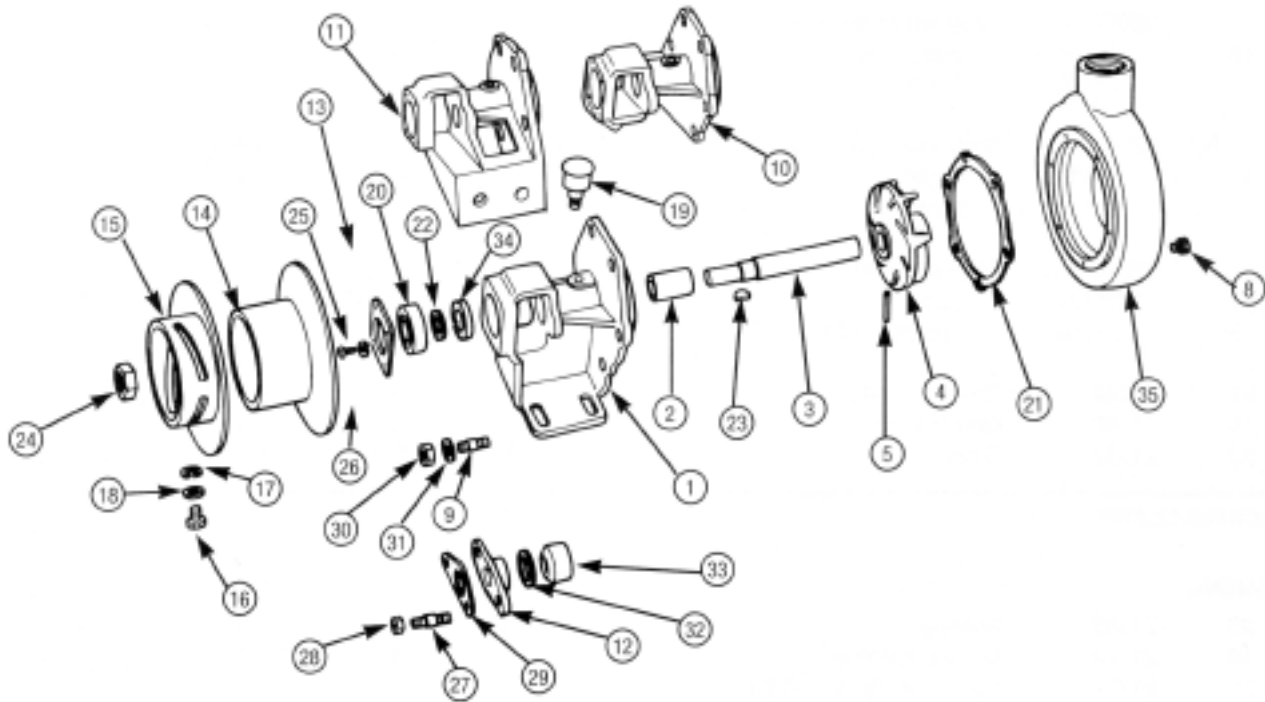


MP PUMPS SERVICE PARTS LIST

- Straight Centrifugal (Bronze)
- Belt Drive
- Foot Mounted
- Stuffing Box Seal

SERIES 130
2" — 1 1/2" Pipe Size



IMPORTANT: When ordering parts, specify model and serial number shown on nameplate.

ITEM NO.	PART NO.	DESCRIPTION	QUANTITY REQUIRED PER MODEL		
			METAL ROTATION	ALL MODELS LISTED ARE BRONZE	
			R. HAND	L. HAND	REVERSIBLE
		MODEL NO.	23182	NA	21613

HOUSING

	22949	Housing Assembly — Inc.:	1	1	1
35	21617	Housing — Bronze	1	1	1
9	21150	Stud — Br. — 5/16"	6	6	6
8	21185	Pipe Plug — Bronze — 1/8" NPT	1	1	1
30	21179	Hex Nut — Br. — 5/16"	6	6	6
31	21184	Washer — Br. — Plain — 5/16"	6	6	6
21	21149	Gasket — .010"	4	4	4

IMPELLER

	21620	Shaft and Impeller Assembly — Inc.:	1	1	1
3	21143	Shaft — S.S.	1	1	1
4	21619	Impeller — Br.	1	1	1
5	21161	Pin — Br. — 3/16"	1	1	1
34	21198	Slinger — Neoprene	1	1	1
23	21163	Key — S.S. — #6	1	1	1



MP PUMPS, INC.

34800 BENNETT • FRASER, MI 48026-1686
 (586) 293-8240 • FAX (586) 293-8469
 (800) 563-8006 • www.mppumps.com

FORM 7017-B

PRINTED IN U.S.A. (9-95)

ITEM NO.	PART NO.	DESCRIPTION	QUANTITY REQUIRED PER MODEL			
			METAL	ALL MODELS LISTED ARE BRONZE		
			ROTATION	R. HAND	L. HAND	REVERSIBLE
			MODEL NO.	23182	NA	21613

BODY

	22927	Body Assembly — Inc.:	1		
10	21164	Body — Br.	1		
2	21154	Bushing — Br.	1		
	NA	Body Assembly — Inc.:		1	
11	NA	Body		1	
2	21154	Bushing		1	
	22920	Body Assembly — Inc.:			1
1	21131	Body — Br.			1
2	21154	Bushing — Br.			1
21	21149	Gasket — .010"	4	4	4
19	21160	Grease Cup	1	1	1
22	21157	Shim	U.A.R.*	U.A.R.*	U.A.R.*

PACKING GLAND

BEARING

20	21159	Bearing	1	1	1
13	21142	Bearing Retainer	1	1	1
25	21177	Round Hd. Screw-10-24	4	4	4
26	21621	Lockwasher #10	4	4	4

PULLEY

	21194	Pulley Assembly — Right Hand — Inc.:	1		
14	21193	Pulley	1		
15	21195	Flange	1		
16	21190	Fillister Head Screw — 1/2"	2		
17	21191	Nut Lock — 9/16"	2		
18	21192	Lockwasher — 15/32"	2		
	NA	Pulley Assembly — Left Hand — Inc.:		1	
14	NA	Pulley		1	
15	NA	Flange		1	
16	21190	Fillister Head Screw — 1/2"		2	
17	21191	Nut Lock — 9/16"		2	
18	21192	Lockwasher — 15/32"		2	
36	21155	Pulley			1
24	21176	Nut — Bronze — 5/8"	1	1	1

*U.A.R. — Use as required



MP PUMPS, INC.

34800 BENNETT • FRASER, MI 48026-1686
 (586) 293-8240 • FAX (586) 293-8469
 (800) 563-8006 • www.mppumps.com

FORM 7017-B

PRINTED IN U.S.A. (9-95)