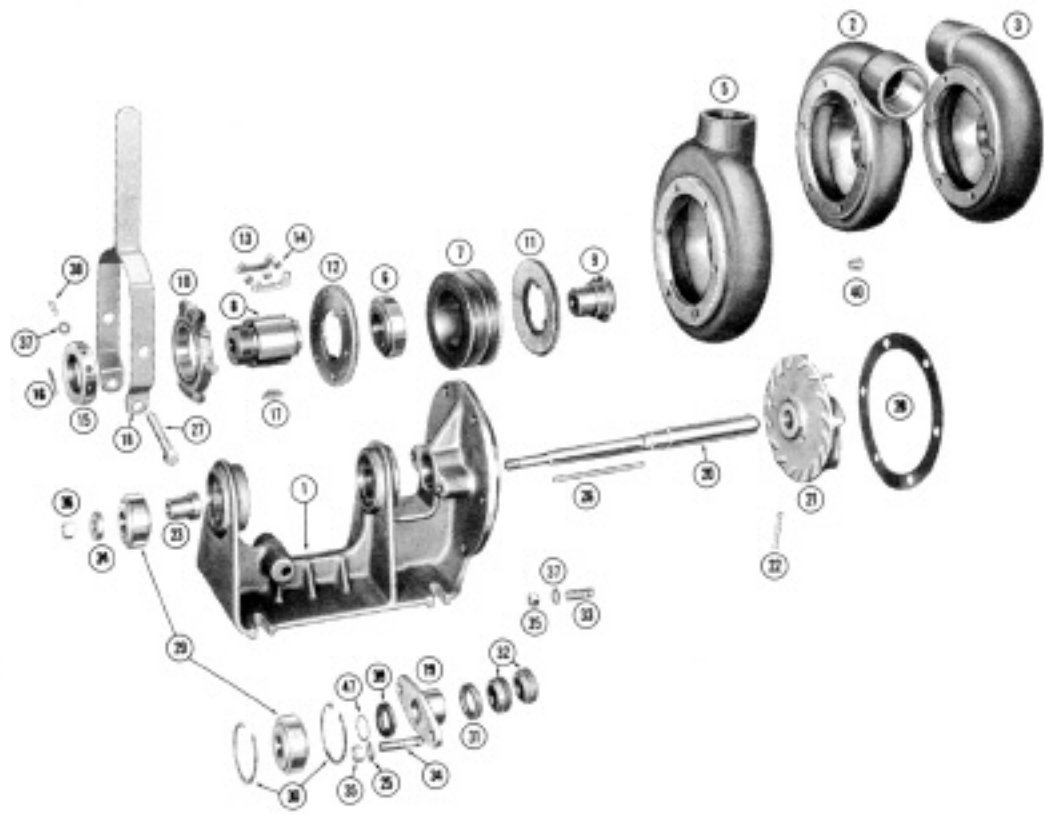


# MP PUMPS SERVICE PARTS LIST

- |  |  |
|--|--|
| <ul style="list-style-type: none"> <li>● Bronze Straight Centrifugal</li> <li>● Clutch Drive      ● Stuffing Box Seal</li> </ul> | <div style="border-left: 1px solid black; padding-left: 10px;"> <p><b>Series 200</b></p> <p><b>2½" x 2" Pipe Size</b></p> </div> |
|--|--|



IMPORTANT: When ordering parts, specify model and serial number shown on nameplate.  
 N/S means not shown on exploded view of parts.

ITEM NO.	PART NO.	DESCRIPTION	QUANTITY REQUIRED PER MODEL			
			METAL	ALL MODELS LISTED ARE BRONZE		
			ROTATION	R. HAND	L. HAND	REVERSIBLE
			PIPE SIZE	2-1/2" x 2"	2-1/2" x 2"	2-1/2" x 2"
			MODEL NO.	NA	NA	NA
<b>HOUSING</b>						
	22936	Housing Assembly - Inc:				
2		Housing - Br.		1		
33	21217	Stud - Br. - 3/8"		6		
40	21186	Pipe Plug - Br. - 1/4" NPT		1		
	22938	Housing Assembly - Inc:			1	
3		Housing - Br.			1	
33	21217	Stud - Br. - 3/8"			6	
40	21186	Pipe Plug - Br. - 1/4" NPT			1	
	22966	Housing Assembly - Inc:				1
5		Housing - Br.				1
33	21217	Stud - Br. - 3/8"				6
40	21186	Pipe Plug - Br. - 1/4" NPT				1
35	21230	Hex Nut - 3/8" Plain		6	6	6
37	21233	Washer - 3/8" - Plain		6	6	6

ITEM NO.	PART NO.	DESCRIPTION	QUANTITY REQUIRED PER MODEL			
			METAL	ALL MODELS LISTED ARE BRONZE		
			ROTATION	R. HAND	L. HAND	REVERSIBLE
			PIPE SIZE	2-1/2" x 2"	2-1/2" x 2"	2-1/2" x 2"
MODEL NO.	NA	NA	NA			

#### IMPELLER

	21688	Shaft and Impeller - Inc:	1		
20	21687	Shaft - S.S.	1		
21	21207	Impeller - Br.	1		
22	21226	Pin - Br. - 1/4"	1		
	21689	Shaft and Impeller Assembly - Inc:		1	
20	21687	Shaft - S.S.		1	
21	21231	Impeller - Br.		1	
22	21226	Pin - Br. - 1/4"		1	
	21690	Shaft and Impeller Assembly - Inc:			1
20	21687	Shaft - S.S.			1
21	21711	Impeller - Br.			1
22	21226	Pin - Br. - 1/4"			1
36	21125	Nut - S.S. - 7/16"	1	1	1
26	21678	Key	1	1	1

#### PACKING GLAND

19	21208	Packing Gland	1	1	1
25	21219	Spring Washer	2	2	2
31	21220	Packing - Service (4 per set)	1 Set	1 Set	1 Set
32	21234	Packing - Solid	1	1	1
34	21721	Stud - Packing Gland	2	2	2
35	21230	Hex Nut - 3/8"	2	2	2
37	21233	Plain Washer - 3/8"	2	2	2

#### BEARING

29	21225	Ball Bearing	2	2	2
30	21695	Snap Ring - Front Bearing	2	2	2
23	21696	Spacer - Rear Bearing	1	1	1
24	21697	Clamp Washer - Rear Bearing	1	1	1
39	21236	Slinger	1	1	1

#### CLUTCH

	21691	Clutch Assembly - Inc:	1	1	1
6	21662	Bearing	1	1	1
7	21694	Pulley	1	1	1
8	21692	Hub (Long)	1	1	1
9	21693	Hub (Short)	1	1	1
	21668	Clutch Parts - Inc:	1	1	1
10	22968	Collar Assembly	1	1	1
11	NA	Pressure Plate Assembly	1	1	1
12	NA	Pressure Plate Assembly (Hardened)	1	1	1
13	NA	Lever	6	6	6
14	NA	Roller - Lever	9	9	9
15	22942	Adjusting Nut	1	1	1
N/S	22941	Adjusting Nut Screw	1	1	1
16	NA	Lock Spring	1	1	1
17	NA	Key	1	1	1

#### BODY

1	NA	Body	1	1	1
18	21673	Lever	1	1	1
28	21216	Gasket - Body to Housing (4 per set)	1 Set	1 Set	1 Set
38	21507	Cotter Pin	1	1	1
27	21679	Shaft - Clutch Lever	1	1	1
37	21233	Plain Washer - 3/8"	2	2	2
47	21224	Shim	*UAR	*UAR	*UAR

\*UAR - Use as required.



**MP PUMPS, INC.**

34800 BENNETT • FRASER, MI 48026-1686  
 (586) 293-8240 • FAX (586) 293-8469  
 (800) 563-8006 • www.mppumps.com

**FORM 7011-A**

PRINTED IN U.S.A.—GB