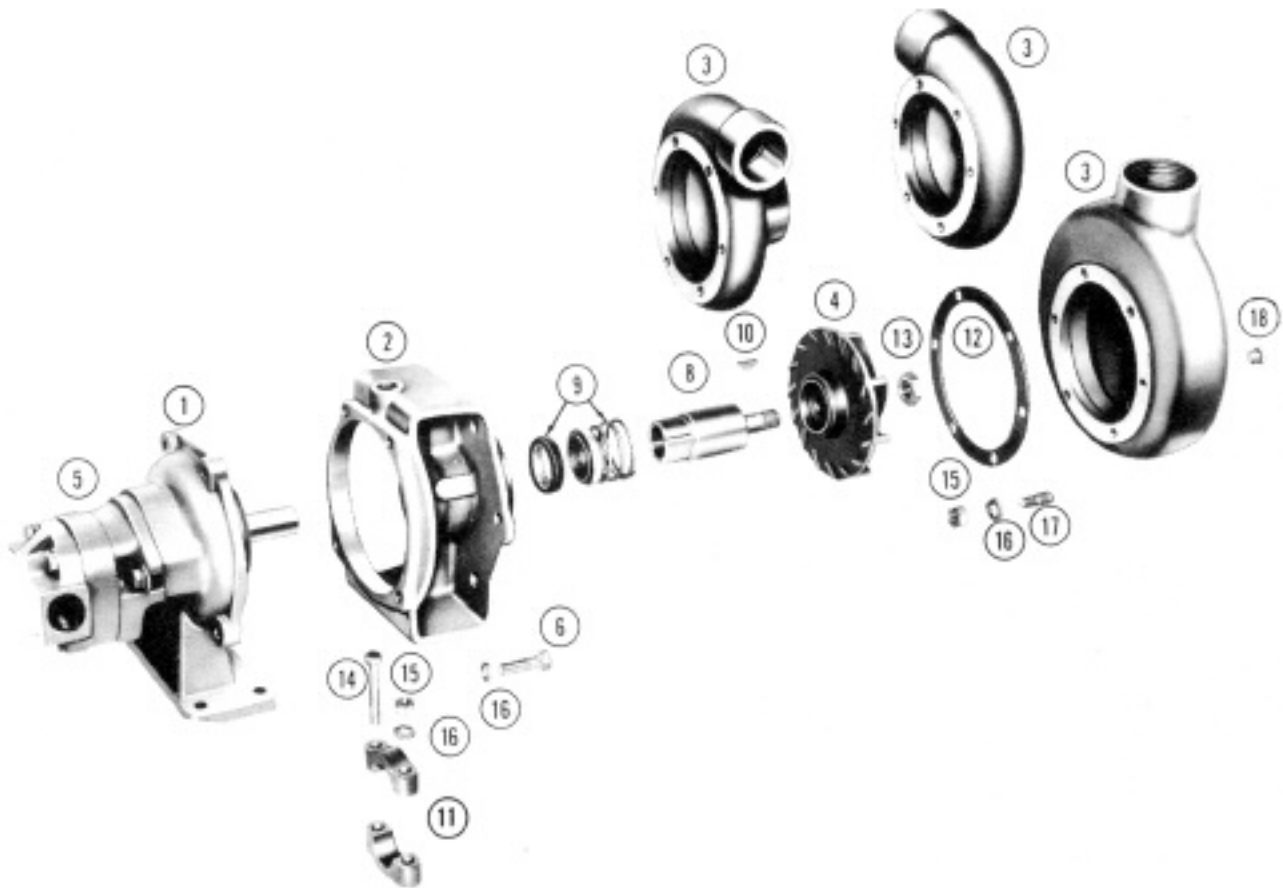


MP PUMPS SERVICE PARTS LIST

- | | | |
|---|---|--|
| <ul style="list-style-type: none"> ● Straight Centrifugal ● Hydraulic Motor Drive | <ul style="list-style-type: none"> ● Pedestal Mounted ● Mechanical Seal | Series 200
2½" x 2" Pipe Size |
|---|---|--|



IMPORTANT: When ordering parts, be sure to specify model and serial number as shown on nameplate.
 N/S means not shown in exploded view of parts

ITEM NO.	PART NO.	DESCRIPTION	QUANTITY REQUIRED PER MODEL	
			ROTATION	ALL MODELS LISTED ARE Righthand
			PIPE SIZE	ALL MODELS LISTED ARE 2-1/2" x 2"
			METAL	CAST IRON BRONZE
			MODEL NO.	NA NA

HOUSING

	22937	Housing Assembly – Includes:		
3	21203	Housing – Cast Iron	1	
17	21260	Stud – S.S. – 3/8"	6	
18	21267	Pipe Plug – S.S. – 1/4" NPT	2	
	22936	Housing – Includes:		
3	21201	Housing – Bronze		1
17	21721	Stud – Br. 3/8"		6
18	21186	Pipe Plug – Br. – 1/4" NPT		

ITEM NO.	PART NO.	DESCRIPTION	QUANTITY REQUIRED PER MODEL		
			ROTATION ALL MODELS LISTED ARE RIGHT HAND		
			PIPE SIZE ALL MODELS LISTED ARE 2-1/2" x 2"		
			METAL	CAST IRON	BRONZE
	MODEL NO.	NA	NA		

HOUSING – Continued

15	21268	Hex Nut – S.S. – 3/8"	6	
15	21230	Hex Nut – Br. – 3/8"		6
16	21266	Lockwasher – S.S. – 3/8"	6	
16	26051	Lockwasher – Br. – 3/8"		6
12	21216	Gasket	4	4

IMPELLER, SLEEVE & SEAL

4	25026	Impeller – Cast Iron	1	
4	25543	Impeller – Bronze		1
13	22655	Locknut – S.S. – 5/8"	1	
13	21176	Locknut – Br. – 5/8"		1
8	22700	Sleeve	1	1
10	21762	Key – S.S. – #8	1	1
9	22361	Seal	1	1

CLAMP

	23039	Clamp Assembly – Includes:	1	1
11	22356	Clamp	2	2
16	21266	Lockwasher – S.S. – 3/8"	2	2
15	21268	Hex Nut – S.S. – 3/8"	2	2
14	21269	Capscrew – S.S. – 3/8"	2	2

ADAPTOR

2	22704	Adaptor – Cast Iron	1	
2	22703	Adaptor – Bronze		1

HYDRAULIC PEDESTAL ASSEMBLY

	NA	Hydraulic Pedestal Assy. includes:	1	1
5	NA	Hydraulic Motor	1	1
1	25772	Pedestal only	1	1
16	21266	Lockwasher S.S. 3/8"	6	6
N/S	21274	Capscrew S.S. 3/8"	6	6



MP PUMPS, INC.

34800 BENNETT • FRASER, MI 48026-1686
 (586) 293-8240 • FAX (586) 293-8469
 (800) 563-8006 • www.mppumps.com

FORM 7063-A

PRINTED IN U.S.A.—GB