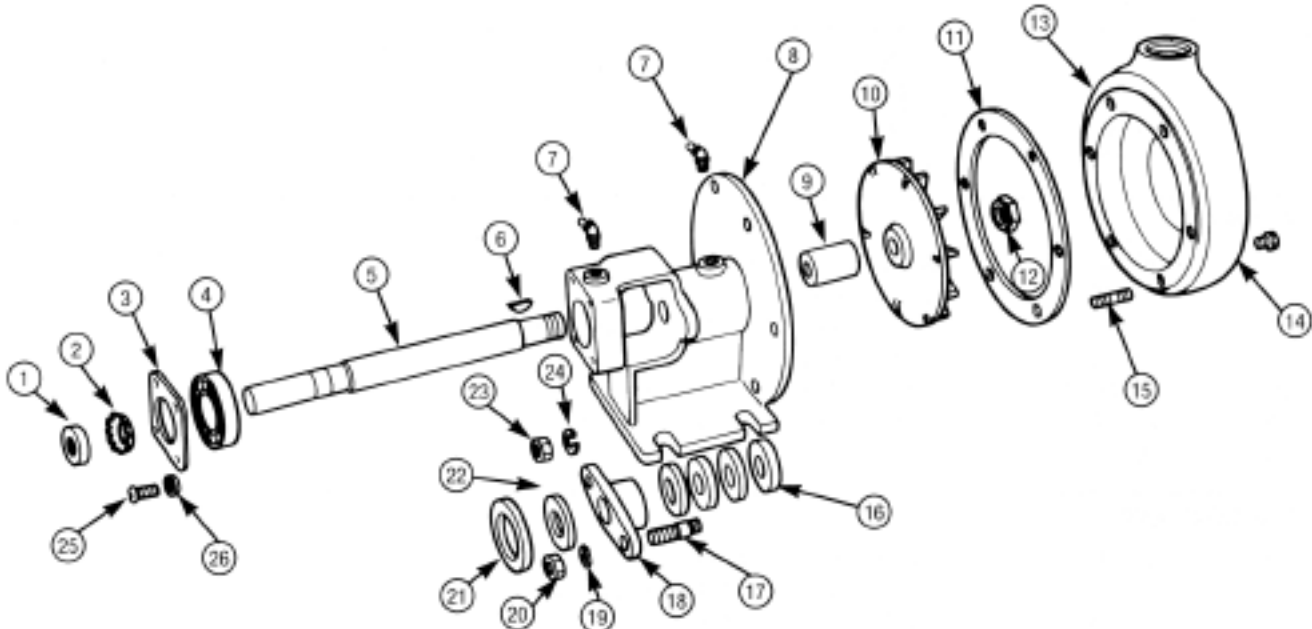


MP PUMPS SERVICE PARTS LIST

- Straight Centrifugal
- Belt or Direct Drive
- Foot Mounted
- Stuffing Box Seal

SERIES 21
1 1/2" — 1 1/4" Pipe Size



IMPORTANT: When ordering parts, specify model and serial number shown on nameplate.
 N/S mean not shown in exploded view of parts.

ITEM NO.	PART NO.	DESCRIPTION	QUANTITY REQUIRED PER MODEL	
			ROTATION	REVERSIBLE
			PIPE SIZE	1-1/2" x 1-1/4"
			METAL	CAST IRON
			MODEL NO.	21102

HOUSING

13	23012	Housing Assembly — Inc.:	1
13	22061	Housing — Cast Iron	1
15	21260	Stud — S.S. — 3/8"	6
14	21185	Pipe Plug — 1/8" NPT	1
23	21268	Hex Nut — S.S. — 3/8"	6
24	21612	Lockwasher — 11/16" — Housing	6
11	21216	Gasket — Housing	4

IMPELLER

10	22063	Impeller — Bronze	1
12	22064	Locknut — 3/4" — Impeller	1
6	21762	Key — #8 — Impeller	1

SHAFT

5	22067	Shaft — Stainless Steel — .875"	1
21	22066	Oil Seal	1
22	21236	Slinger — Shaft	1



MP PUMPS, INC.

34800 BENNETT • FRASER, MI 48026-1686
 (586) 293-8240 • FAX (586) 293-8469
 (800) 563-8006 • www.mppumps.com

FORM 7012-B

PRINTED IN U.S.A. (9-95)

ITEM NO.	PART NO.	DESCRIPTION	QUANTITY REQUIRED PER MODEL	
			ROTATION	REVERSIBLE
			PIPE SIZE	1-1/2" x 1-1/4"
			METAL	CAST IRON
			MODEL NO.	21102

BODY

8	23009	Body Assembly — Inc.:	1
8	22051	Body — Cast Iron	1
9	21221	Bushing	1
17	21721	Stud — Br. — 3/8"	2
N/S	21720	Shim — Br.	1

BEARING

4	22062	Ball Bearing — (Lubricated)	1
7	22065	Grease Fitting	2
26	21192	Lockwasher — 15/32" — Bearing Retainer	4
3	21210	Bearing Retainer	1
25	21229	Screw — 1/4" — Bearing Retainer	4
2	22302	Lockwasher — 1-17/32" — Bearing	1
1	22303	Locknut — 1-3/8" — Bearing	1

PACKING GLAND

18	21208	Packing Gland — Bronze	1
19	21219	Spring Washer — 47/64" — Packing Gland	2
20	21268	Hex Nut — S.S. — 3/8"	2
16	21234	Packing — Overhaul	1
16	21220	Packing — Service	4



MP PUMPS, INC.

34800 BENNETT • FRASER, MI 48026-1686
 (586) 293-8240 • FAX (586) 293-8469
 (800) 563-8006 • www.mppumps.com

FORM 7012-B

PRINTED IN U.S.A. (9-95)