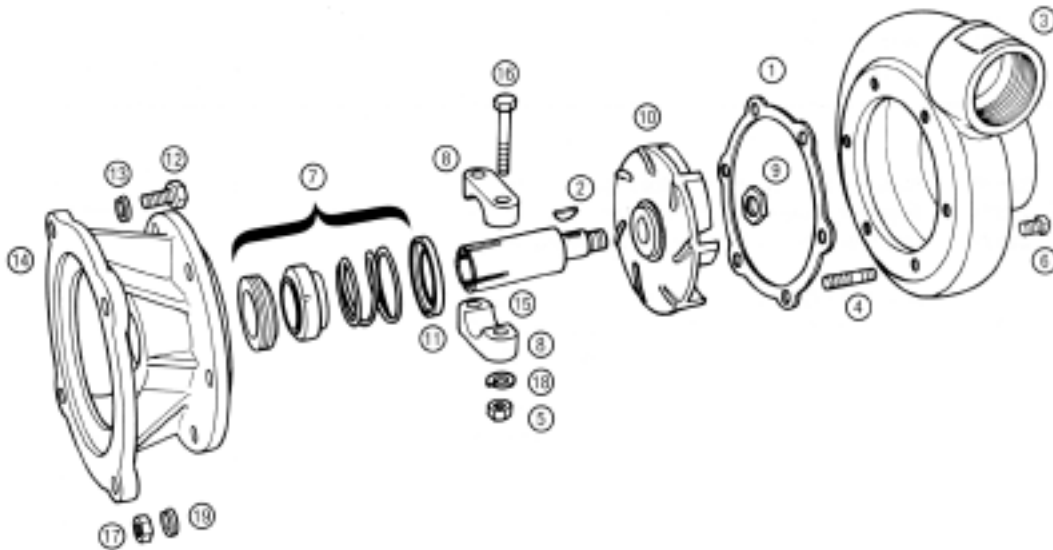


# MP PUMPS SERVICE PARTS LIST

- Straight Centrifugal      ● Pumpak
- Electric Motor Drive      ● Mechanical Seal

**Series 30**  
**1" x 3/4" Pipe Size**



**IMPORTANT:** When ordering parts, specify model and serial number shown on nameplate.  
N/S means "not shown" in exploded view of parts.

ITEM NO.	PART NO.	DESCRIPTION	QUANTITY REQUIRED PER MODEL			
			ROTATION	ALL MODELS LISTED ARE RIGHT HAND		
			PIPE SIZE	ALL MODELS LISTED ARE 1" x 3/4"		
			METAL	CAST IRON	ALUMINUM	BRONZE
			MODEL NO.	23221	NA	23220
			23222	NA	23938	
			24319	NA	24318	
			22678	NA	24186	

**HOUSING**

	22915	Housing Assembly - Inc:	1	
3		Housing - Cast Iron	1	
4	28059	Stud - S.S. - 5/16"	4	
6	21255	Pipe Plug - S.S. - 1/8" NPT	2	
	<b>NA</b>	Housing Assembly - Inc:		1
3		Housing - Aluminum		1
4	28059	Stud - S.S. - 5/16"		4
6	21255	Pipe Plug - S.S. - 1/8" NPT		1
	22914	Housing Assembly - Inc:		1
3		Housing - Bronze		1
4	21150	Stud - Br. - 5/16"		4
6	21185	Pipe Plug - Bronze - 1/8" NPT		1



**MP PUMPS, INC.**

34800 BENNETT • FRASER, MI 48026-1686  
(586) 293-8240 • FAX (586) 293-8469  
(800) 563-8006 • www.mppumps.com

**FORM 7020-E**

PRINTED IN U.S.A. (8-97)

ITEM NO.	PART NO.	DESCRIPTION	QUANTITY REQUIRED PER MODEL			
			ROTATION	ALL MODELS LISTED ARE RIGHT HAND		
			PIPE SIZE	ALL MODELS LISTED ARE 1" x 3/4"		
			METAL	CAST IRON	ALUMINUM	BRONZE
MODEL NO.	23221	NA	23220			
	23222	NA	23938			
	24319	NA	24318			
	22678	NA	24186			

#### HOUSING

17	21244	Hex Nut - S.S. - 5/16"	4	4	
19	21238	Lockwasher - S.S. - 5/16"	4	4	
17	21179	Hex Nut - Br. - 5/16"			4
19	21184	Washer - Br. 5/8"			4
1	21126	Gasket	4	4	4

#### IMPELLER

10	22573	Impeller C.I. - 3-1/4" dia. for Model 23221	1		
10	NA	Impeller - Alum. - 3-1/4" dia. for Model 23219		1	
10	22572	Impeller - Br. - 3-1/4" dia. for Model 23220			1
10	22138	Impeller - C.I. - 2-7/8" dia. for Model 23222	1		
10	NA	Impeller - Alum. - 2-7/8" dia. for Model 24316		1	
10	22137	Impeller - Br. - 2-7/8" dia. for Model 23938			1
10	22149	Impeller - C.I. - 3-1/8" dia. for Model 24319	1		
10	NA	Impeller - Alum. - 3-1/8" dia. for Model 24317		1	
10	22148	Impeller - Br. - 3-1/8" dia. for Model 24318			1
10	22143	Impeller - C.I. - 2-1/2" dia. for Model 22678	1		
10	NA	Impeller - Alum. - 2-1/2" dia. for Model 24320		1	
10	22142	Impeller - Br. 2-1/2" dia. for Model 24186			1
15	22131	Impeller Drive Sleeve 5/8"	1	1	1
9	22588	Lock Nut - S.S. - 3/8"	1	1	1
2	21865	Impeller Drive Key	1	1	1

#### Clamp

	23002	Clamp Assembly Inc.			
8		Clamp	2	2	2
5	21284	Hex Nut - S.S. - 5/16"	2	2	2
18	21238	Lockwasher - S.S. - 5/16"	2	2	2
16	21264	Capscrew - S.S. - 5/16"	2	2	2

#### SEAL

7	22272	Seal Assembly	1	1	1
11	22133	Seal Spring Retainer	1	1	1

#### ADAPTOR

14	22130	Adaptor - Cast Iron	1		
14	NA	Adopter - Aluminum		1	
14	22129	Adaptor - Bronze			1
12	21251	Capscrew - S.S. - 3/8"	4	4	4
13	21266	Lockwasher - S.S. - 3/8"	4	4	4



**MP PUMPS, INC.**

34800 BENNETT • FRASER, MI 48026-1686  
 (586) 293-8240 • FAX (586) 293-8469  
 (800) 563-8006 • www.mppumps.com

**FORM 7020-E**

PRINTED IN U.S.A. (8-97)