

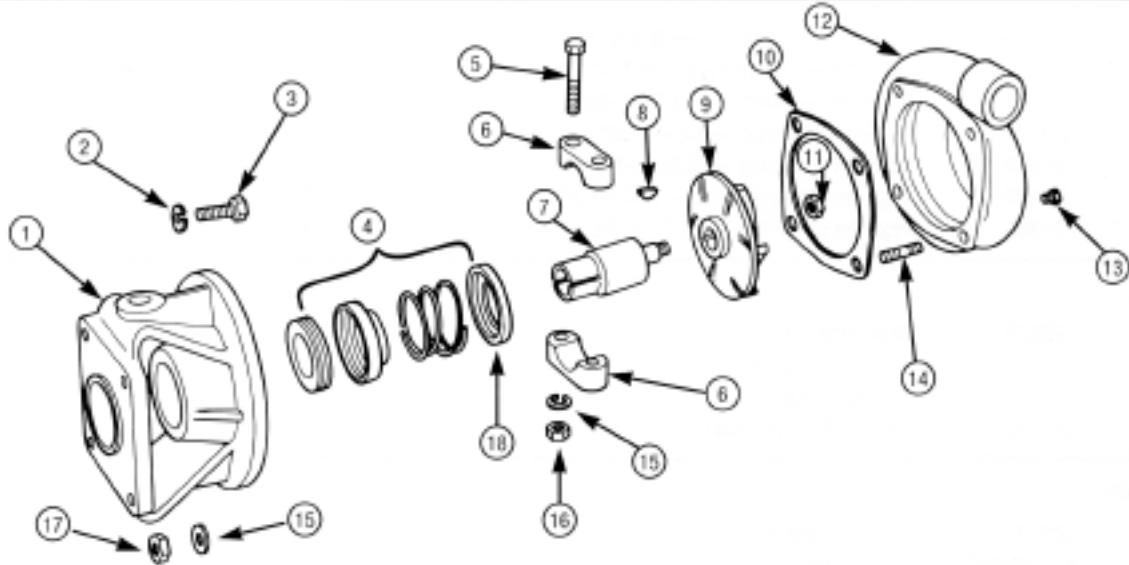
# MP PUMPS SERVICE PARTS LIST

- Straight Centrifugal
- Mechanical Seal

• Pumpak

**SERIES 30**

**1" — 3/4" Pipe Size**



**IMPORTANT:** When ordering parts, specify model and serial number shown on nameplate.  
N/S means not shown in exploded view of parts.

ITEM NO.	PART NO.	DESCRIPTION	QUANTITY REQUIRED PER MODEL			
			ROTATION	ALL MODELS LISTED ARE RIGHT HAND		
			METAL	CAST IRON	ALUMINUM	BRONZE
			MODEL NO.	23081	NA	23080

**HOUSING**

	22915	Housing Assembly — Inc.:	1			
12	21107	Housing — Cast Iron	1			
14	21243	Stud — S.S. — 5/16"	4			
13	21255	Pipe Plug — S.S. — 1/8" NPT	2			
	<b>NA</b>	Housing Assembly — Inc.:		1		
12	<b>NA</b>	Housing — Aluminum		1		
14	21243	Stud — S.S. — 5/16"		4		
13	21255	Pipe Plug — S.S. — 1/8" NPT		1		
	22914	Housing Assembly — Inc.:				1
12	21106	Housing — Bronze				1
14	21150	Stud — Br. — 5/16"				4
13	21185	Pipe Plug — Br. — 1/8" NPT				1
17	21244	Hex Nut — S.S. — 5/16"	4	4		
17	21179	Hex Nut — Br. — 5/16"				4
15	21184	Flatwasher — Br. — 5/16"				4
15	21238	Lockwasher — S.S. — 5/16"	4	4		
10	21126	Gasket	4	4		4



**MP PUMPS, INC.**

34800 BENNETT • FRASER, MI 48026-1686  
(586) 293-8240 • FAX (586) 293-8469  
(800) 563-8006 • www.mppumps.com

**FORM 7024-B**

PRINTED IN U.S.A. (9-95)

ITEM NO.	PART NO.	DESCRIPTION	QUANTITY REQUIRED PER MODEL			
			ROTATION	ALL MODELS LISTED ARE RIGHT HAND		
			METAL	CAST IRON	ALUMINUM	BRONZE
			MODEL NO.	23081	NA	23080

#### HOUSING

9	22573	Impeller — Cast Iron — 3-1/4" Dia.	1		
9	NA	Impeller — Aluminum — 3-1/4" Dia.		1	
9	22572	Impeller — Bronze — 3-1/4" Dia.			1
11	22578	Impeller Locknut — Br. — 1/2"			1
11	22588	Impeller Locknut — S.S. — 1/2"	1	1	
7	22163	Impeller Drive Sleeve — 3/4" Shaft	1	1	1
8	21865	Impeller Drive Key — S.S. — #6	1	1	1

#### SEAL

4	22272	Seal Assembly — Inc.:	1	1	1
		Seal Washer	1	1	1
		Seal Seat	1	1	1
18	22133	Seal — Spring Retainer	1	1	1

#### CLAMP

	23002	Clamp Assembly — Inc.:	1	1	1
6	21946	Clamp	2	2	2
5	21264	Capscrew — S.S. — 5/16"	2	2	2
16	21284	Hex Nut — S.S. — 5/16"	2	2	2
15	21238	Lockwasher — S.S. — 5/16"	2	2	2

#### ADAPTOR

1	22159	Adaptor — Cast Iron	1		
1	NA	Adaptor — Aluminum		1	
1	22158	Adaptor — Bronze			1
2	21238	Lockwasher — S.S. — 5/16" — Engine	4	4	4
3	21278	Capscrew — S.S. — 5/16" — Engine	4	4	4

#### BASE

N/S	21955	Base — Steel	1	1	1
N/S	21292	Capscrew — S.S. — 5/16" — Engine	4	4	4
N/S	21284	Hex Nut — S.S. — 5/16" — Engine	4	4	4
N/S	21238	Lockwasher — S.S. — 5/16" — Engine	4	4	4
N/S	21938	Handle	1	1	1
N/S	22637	Locknut — Steel — 1/2"	1	1	1

#### ENGINE

N/S	22335	Engine — 3HP, 3/4" Shaft	1	1	1
-----	-------	--------------------------	---	---	---



**MP PUMPS, INC.**

34800 BENNETT • FRASER, MI 48026-1686  
 (586) 293-8240 • FAX (586) 293-8469  
 (800) 563-8006 • www.mppumps.com

**FORM 7024-B**

PRINTED IN U.S.A. (9-95)