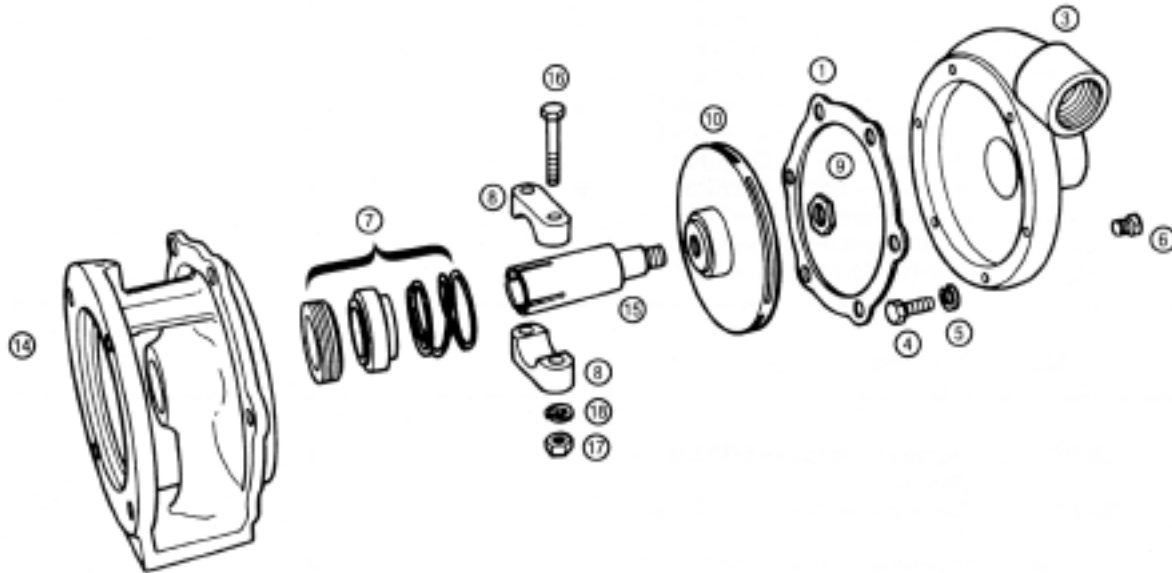


MP PUMPS SERVICE PARTS LIST

- Straight Centrifugal
- Electric Motor Drive
- Pumpak
- Mechanical Seal

SERIES 80
1 1/2" x 1 1/4" Pipe Size



IMPORTANT: When ordering parts, specify model and serial number shown on nameplate.
 N/S means not shown in exploded view of parts.

| ITEM NO. | PART NO. | DESCRIPTION | QUANTITY REQUIRED PER MODEL | | |
|----------|----------|-------------|-----------------------------|---------------------------------------|--------|
| | | | ROTATION | ALL MODELS LISTED ARE RIGHT HAND | |
| | | | PIPE SIZE | ALL MODELS LISTED ARE 1-1/2" x 1-1/4" | |
| | | | METAL | CAST IRON | BRONZE |

HOUSING

| | | | | | |
|---|-------|-------------------------------------|--|---|---|
| 3 | 25840 | Housing Assembly — Cast Iron Incl.: | | | |
| | | Housing — Cast Iron | | 1 | |
| 4 | 25663 | Capscrew — S.S. — 3/8" — 16" x 3/4" | | 6 | |
| 5 | 21266 | Lockwasher — S.S. — 3/8" x 1/8" | | 6 | |
| 6 | 21255 | Pipe Plug — S.S. — 1/8" | | 2 | |
| 1 | 25662 | Gasket — Housing | | 1 | |
| 3 | 25842 | Housing Assembly — Bronze Incl.: | | | |
| | | Housing — Bronze | | | 1 |
| 4 | 25663 | Capscrew — S.S. — 3/8" — 16" x 3/4" | | 6 | |
| 5 | 21266 | Lockwasher — S.S. — 3/8" x 1/8" | | 6 | |
| 6 | 21185 | Pipe Plug — Bronze — 1/8" | | 2 | |
| 1 | 25662 | Gasket — Housing | | | 1 |



MP PUMPS, INC.

34800 BENNETT • FRASER, MI 48026-1686
 (586) 293-8240 • FAX (586) 293-8469
 (800) 563-8006 • www.mppumps.com

FORM 7047-C

PRINTED IN U.S.A. (8-97)

| ITEM NO. | PART NO. | DESCRIPTION | QUANTITY REQUIRED PER MODEL | | |
|----------|----------|-------------|-----------------------------|---------------------------------------|--------|
| | | | ROTATION | ALL MODELS LISTED ARE RIGHT HAND | |
| | | | PIPE SIZE | ALL MODELS LISTED ARE 1-1/2" x 1-1/4" | |
| | | | METAL | CAST IRON | BRONZE |

IMPELLER ENCLOSED

| | | | | |
|----|-------|--------------------------------------|---|---|
| 10 | 25668 | Impeller — 5.9" — Bronze | 1 | 1 |
| 10 | 26090 | Impeller — 5.75" — Bronze | 1 | 1 |
| 10 | 25443 | Impeller — 5.5" — Bronze | 1 | 1 |
| 10 | 25818 | Impeller — 5.0" — Bronze | 1 | 1 |
| 10 | 25867 | Impeller — 4.8" — Bronze | 1 | 1 |
| 10 | 25988 | Impeller — 4.5" — Bronze | 1 | 1 |
| 10 | 25910 | Impeller — 5.9" — Cast Iron Optional | 1 | 1 |
| 10 | 25975 | Impeller — 5.5" — Cast Iron Optional | 1 | 1 |
| 10 | 26487 | Impeller — 5.0" — Cast Iron Optional | 1 | 1 |
| 10 | 26437 | Impeller — 4.5" — Cast Iron Optional | 1 | 1 |
| 15 | 25664 | Drive Sleeve — S.S. — 7/8" | 1 | 1 |
| 15 | 22253 | Drive Sleeve — S.S. — 5/8" | 1 | 1 |
| 9 | 22655 | Hex Jam Nut — S.S. — 5/8" | 1 | 1 |

SEAL

| | | | | |
|---|-------|---------------|---|---|
| 7 | 22272 | Seal Assembly | 1 | 1 |
|---|-------|---------------|---|---|

CLAMP

| | | | | |
|----|-------|--|---|---|
| 8 | 23002 | Clamp Assembly — 5/8" Sleeve Clamp | 1 | 1 |
| 8 | 23003 | Clamp Assembly — 7/8" Sleeve Clamp | 1 | 1 |
| 16 | 21264 | Capscrew — S.S. — 5/16" — 18" x 1-3/4" | 2 | 2 |
| 17 | 21284 | Hex Nut — S.S. — 5/16" — 18" x 17/64" | 2 | 2 |
| 18 | 21238 | Lockwasher — S.S. — 5/16" x 1/8" | 2 | 2 |

ADAPTOR

| | | | | |
|----|-------|-------------------------------------|---|---|
| 14 | 25332 | Adaptor — Cast Iron | 1 | |
| 14 | 25674 | Adaptor — Bronze | | 1 |
| 12 | 21251 | Capscrew — S.S. — 3/8" — 16" x 7/8" | 4 | 4 |
| 13 | 21266 | Lockwasher — S.S. — 3/8" x 1/8" | 4 | 4 |


MP PUMPS, INC.

34800 BENNETT • FRASER, MI 48026-1686
 (586) 293-8240 • FAX (586) 293-8469
 (800) 563-8006 • www.mppumps.com

FORM 7047-C

PRINTED IN U.S.A. (8-97)