

HIGH HEAD CENTRIFUGAL PUMP FEATURES

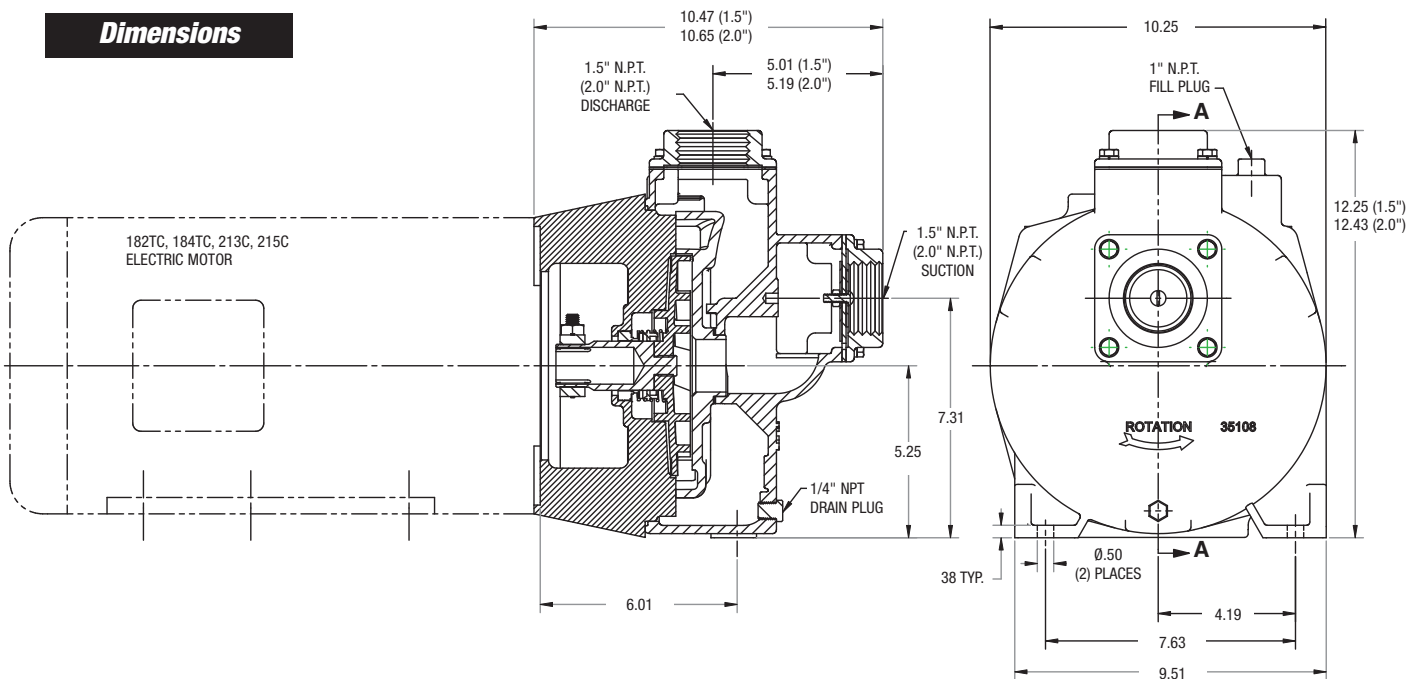
- 1 1/2 x 1 1/2
2 X 2 HIGH HEAD
- PUMPAK ONLY TO MOUNT TO STANDARD NEMA "C" FACE MOTOR
- "C" FACE ELECTRIC MOTOR DRIVE 5-7.5 HP
- PEDESTAL DRIVE
- HYDRAULIC DRIVE AND CLUTCHPAK'S
- FLOWS - TO 140 GPM
- PRESSURES - TO 190 TDH
- CAST IRON OR BRONZE CONSTRUCTION
- DRIVE SLEEVE - 304 STAINLESS STEEL
- FASTENERS - STAINLESS STEEL
- SEALS - STANDARD CARBON, CERAMIC, STAINLESS STEEL AND VITON WITH OTHER OPTIONS AVAILABLE (CONSULT FACTORY)
- ABS TYPE APPROVED FOR MANY SHIPBOARD SERVICES



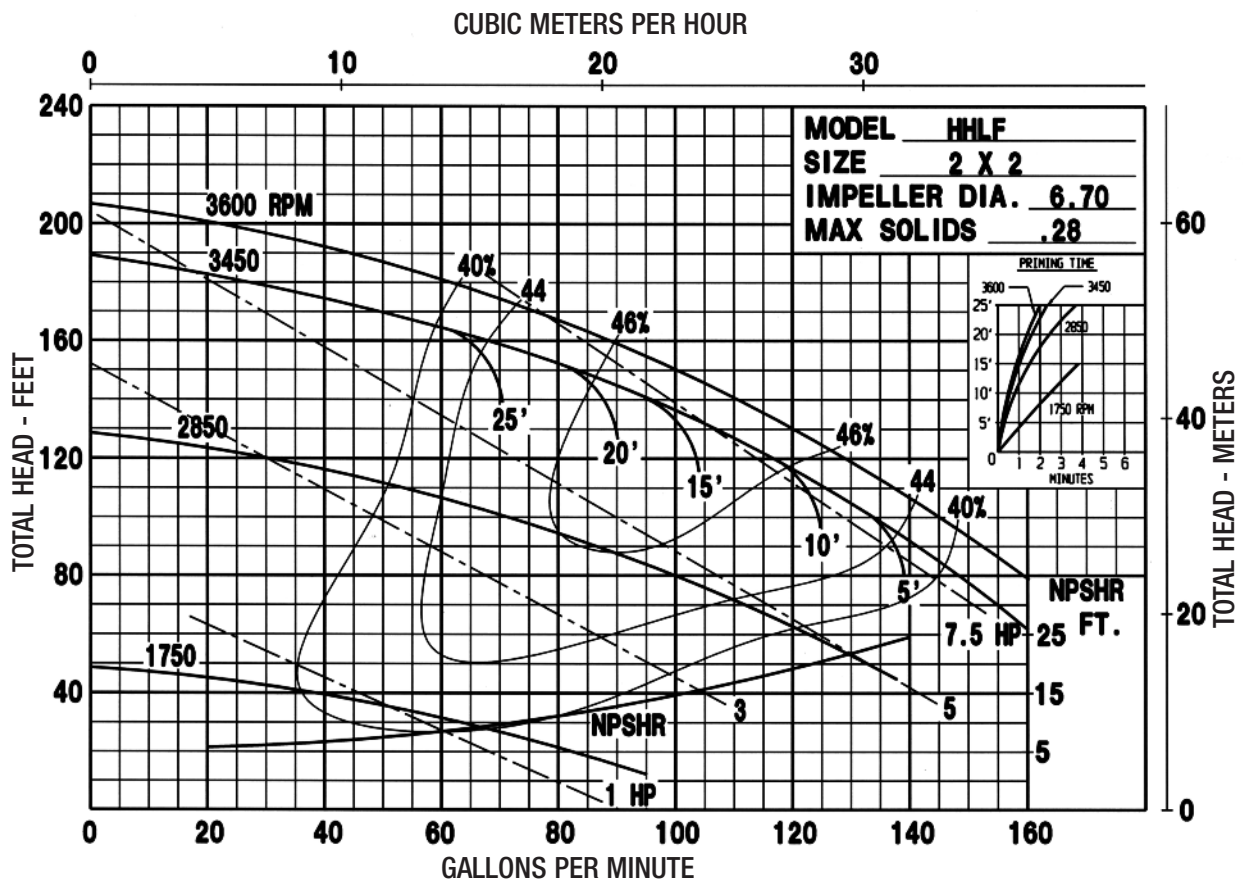
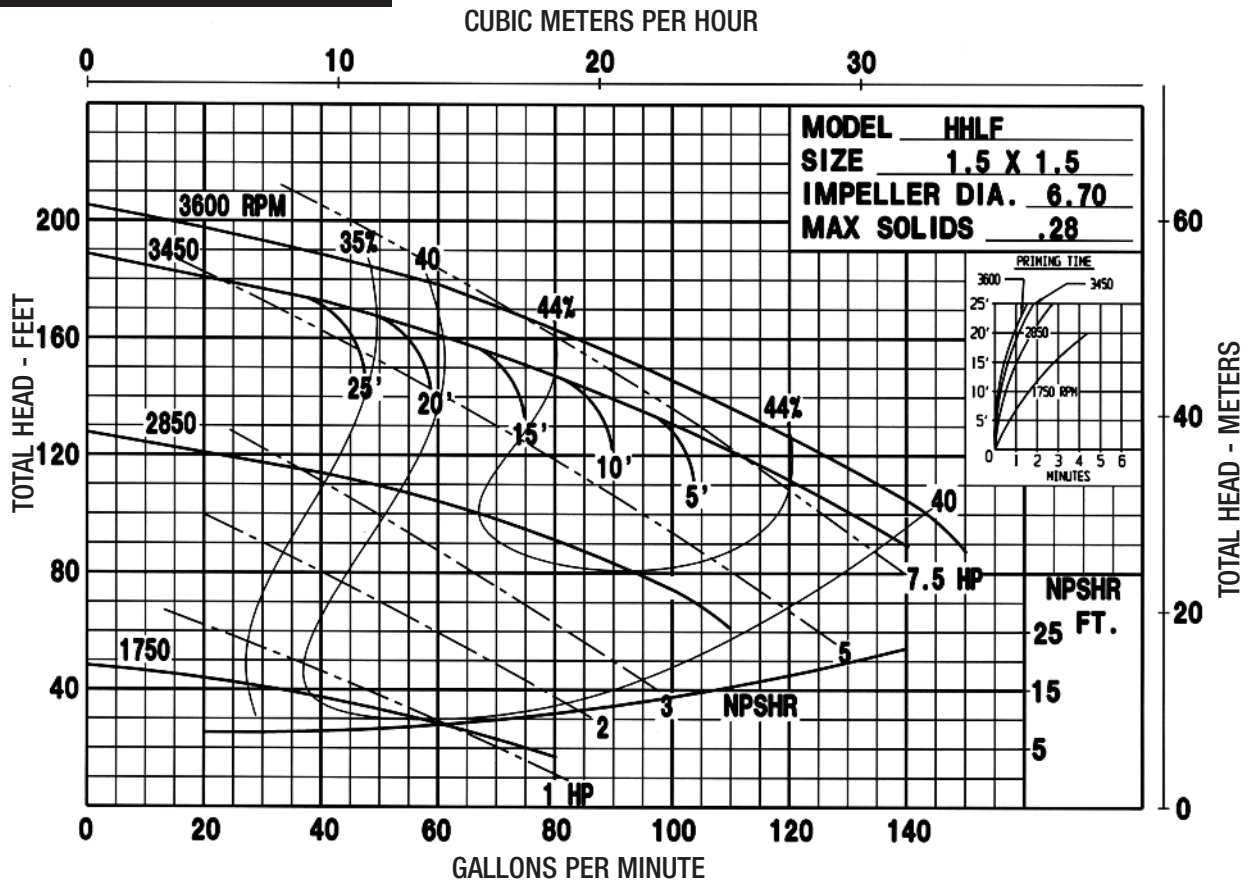
HHLF

MODEL	Suction	Discharge
HHLF	1 1/2"-2" NPT	1 1/2"-2" NPT

Dimensions



Pump Performance Curves



Other Performance Curves Available Upon Request