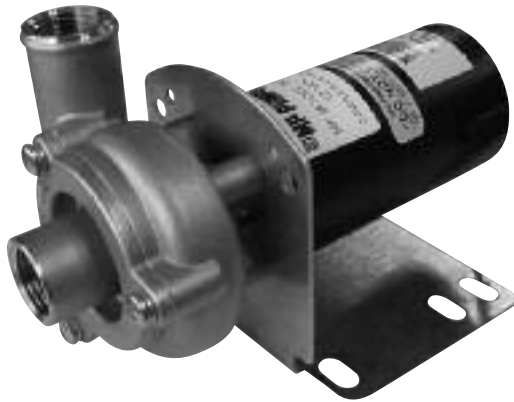


FRX Series

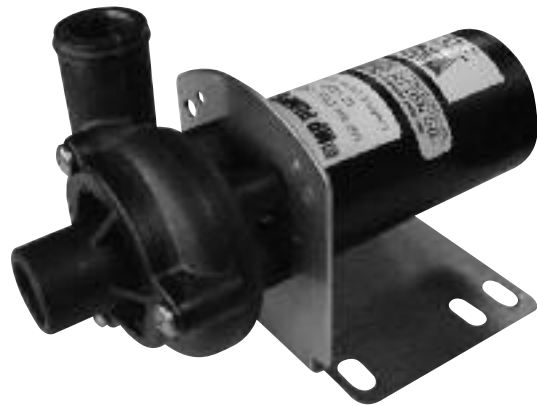
FRACTIONAL HP CENTRIFUGAL PUMP FEATURES

- CLOSE COUPLED TO ELECTRIC MOTORS
- 316 SS CONSTRUCTION
FRX 50-R POLYPHENYLENE HOUSING AND COVER
- FLOWS: 8-25 GPM
- PRESSURES: 9 TO 30 FEET HEAD
- IMPELLER: 316 STAINLESS STEEL
- MECHANICAL SEALS: CARBON/CERAMIC/VITON
- MOTOR OPTIONS: 12VDC AND 24VDC
HYDRAULIC: FRX75, FRX75 SP

MODEL	Suction	Discharge
FRX 50	1/2" NPT/1" HOSE	1/2" NPT/1" HOSE
FRX 50-R	1" HOSE	1" HOSE
FRX 75	3/4" NPT	3/4" NPT



FRX 50



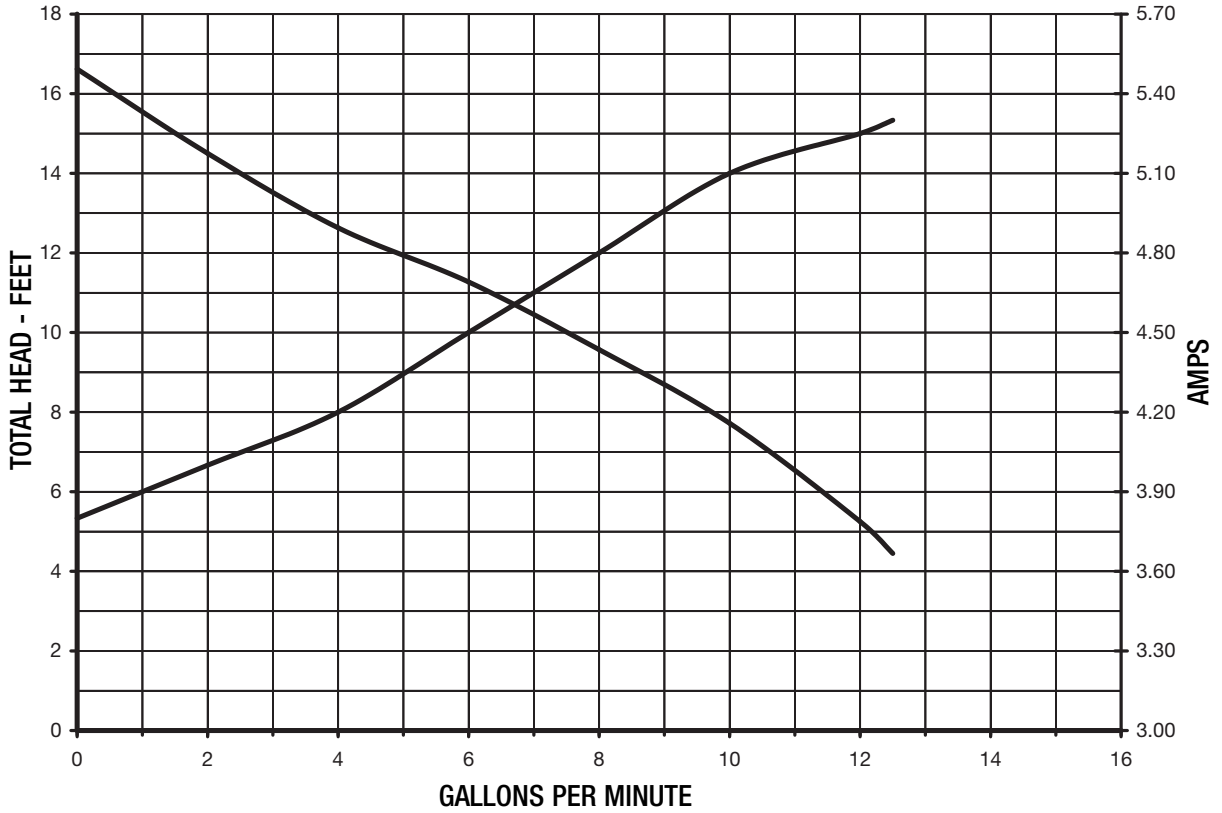
FRX 50-R



FRX 75

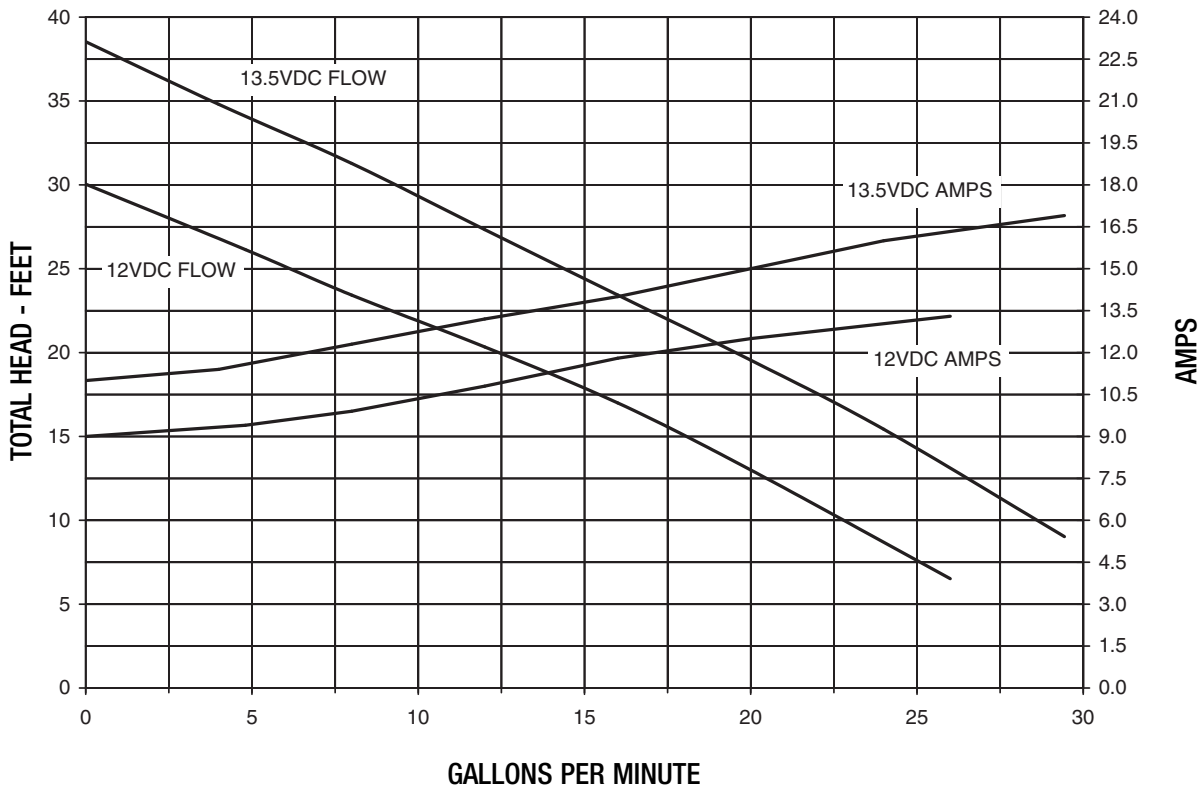
FRX 50 & FRX 50-R Performance Curves

**12V DC MOTOR
FOR 24 V DC MOTOR
DIVIDE AMPS BY TWO**

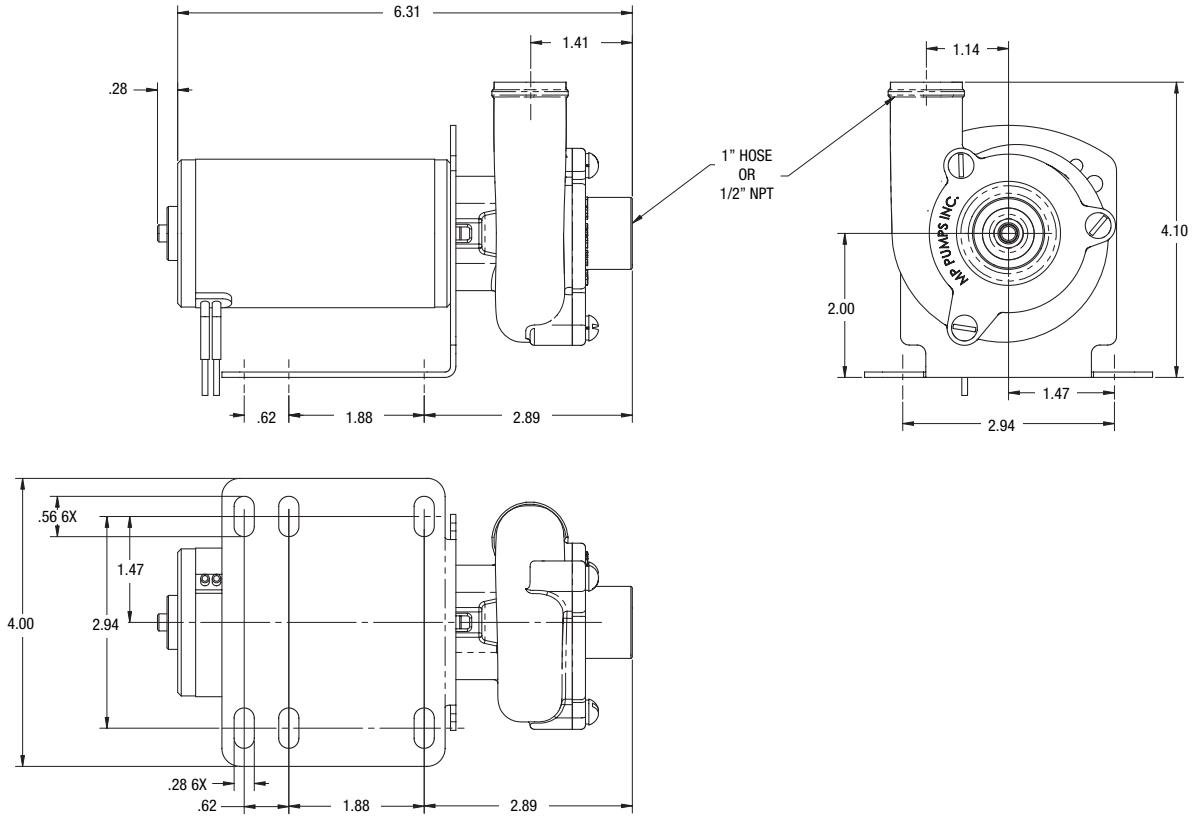


FRX 75 12 or 24V Performance Curves

**12V DC MOTOR
FOR 24 V DC MOTOR
DIVIDE AMPS BY TWO**



FRX 50 & FRX 50-R Dimensions



FRX 75 12 or 24V Dimensions

