

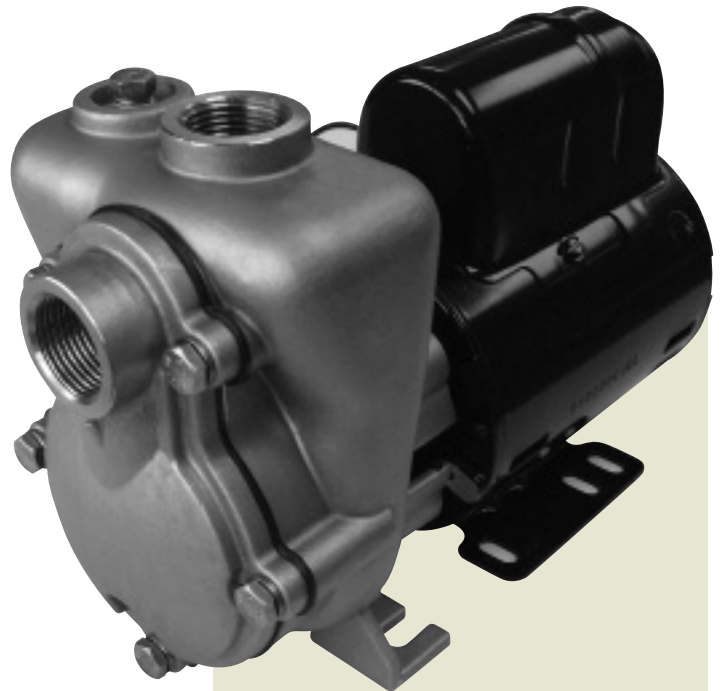
# MP PUMPS, INC.

## FRX 75-SP

### Centrifugal Pump

Model FRX 75-SP is a high performance self-priming 316 stainless steel centrifugal pump. The pump is ideal for marine, industrial, agricultural or commercial applications where suction lift is required.

The FRX 75-SP model features all 316 stainless steel components for superior corrosion resistance when pumping chemical compounds. A carbon/ceramic/viton bellows shaft seal is standard. Ports are 3/4" NPT with 1/8" NPT fill port. The O-ring/flapper design enhances the self-priming capability to 12 foot suction lift. Marine ignition protected motors available.



### SPECIFICATIONS:

<b>Housing</b> . . . . .	<b>316 Stainless Steel (Investment Cast)</b>
<b>Cover</b> . . . . .	<b>316 Stainless Steel (Investment Cast)</b>
<b>Impeller</b> . . . . .	<b>316 Stainless Steel Semi-Open (Sintered PM)</b>
<b>Wear Plate</b> . . . . .	<b>316 Stainless Steel</b>
<b>Mechanical Seal</b> . .	<b>Carbon/Ceramic/Viton Bellows 150 PSI Special Seals Upon Request</b>
<b>O-ring/Flapper</b> . . .	<b>Viton</b>
<b>Motor</b> . . . . .	<b>12V DC and 24V DC . . . . . 115V AC ODP and TENV . . . . . 230V AC TENV</b>
<b>Weights</b> . . . . .	<b>Pump W/AC Motor 18 lbs. . . . . . Pump W/DC Motor 12 lbs.</b>

#### Application:

- Marine
- Industrial
- Commercial

#### Construction:

- 316 Stainless Steel Investment Cast

#### Motor Options:

- AC
- DC

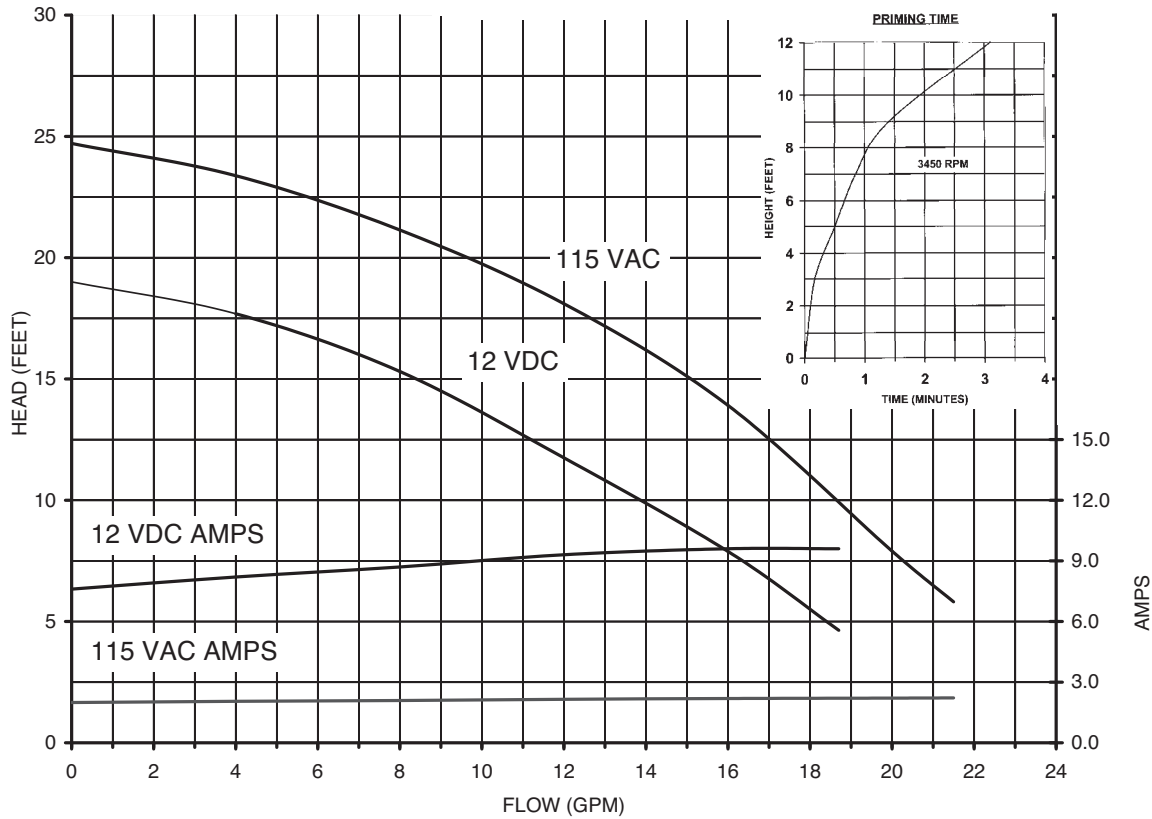
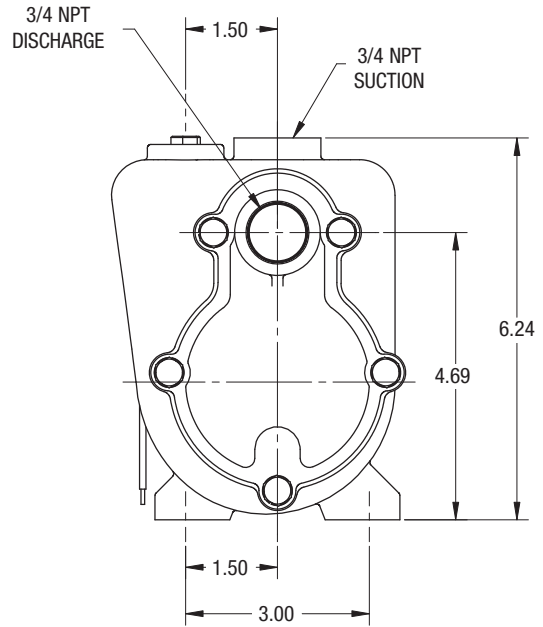
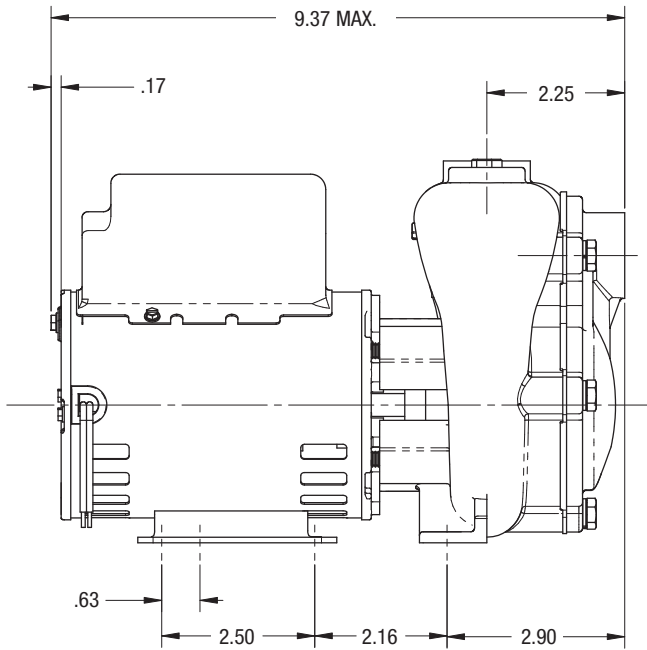
#### Port Sizes:

- 3/4" NPT
- 1/8" NPT Fill Port

#### Seal:

- Carbon / Ceramic / Viton

# FRX 75-SP



34800 BENNETT • FRASER, MI 48026-1686  
 (586) 293-8240 • FAX (586) 293-8469  
 (800) 563-8006 • www.mppumps.com

[www.mppumps.com](http://www.mppumps.com)

FORM 8130-A (02/07)  
 Litho in USA