

MP PUMPS, INC.

FRX75 SP HYD

Hydraulic Driven Centrifugal Pump

Model FRX75-SP HYD is a high performance self-priming 316 stainless steel centrifugal pump close coupled to a hydraulic motor. The pump is ideal for marine, agricultural, and industrial applications where suction lift is required.

The FRX75-SP HYD model features all 316 stainless steel components for superior corrosion resistance when pumping chemical compounds. A carbon/ceramic/viton bellows shaft seal is standard. Ports are 3/4" NPT with a 1/8" NPT fill port. The check valve flapper design enhances the self-priming capability to 12 foot suction lift.

The hydraulic motor is designed with SAE #6 ports for the tank side while the pressure side has SAE # 4 ports. Maximum Pressure is 1000 PSI. Maximum Oil Flow is 3 GPM.



SPECIFICATIONS:

Housing	316 Stainless Steel (Investment Cast)
Cover	316 Stainless Steel (Investment Cast)
Impeller	316 Stainless Steel Semi-Open (Sintered PM)
Wear Plate	316 Stainless Steel
Mechanical Seal . . .	Carbon/Ceramic/Viton Bellows 150 PSI Special Seals Upon Request
O-ring/Flapper	Viton
Hydraulic Motor	Iron, Gerotor Type, .08 Cu. In. Displacement
Weight	12 lbs.

COMPATIBLE FOR:

Application:

- Marine
- Agricultural
- Industrial

Construction

- 316 Stainless Steel Investment Cast

Hydraulic Motor

- .08 cu. in displacement
- Max. Oil Flow: 3 GPM
- Max. Pressure: 1000 PSI

Hyd. Motor Port Sizes:

- SAE # 4 Pressure
- SAE # 6 Tank

Port Sizes:

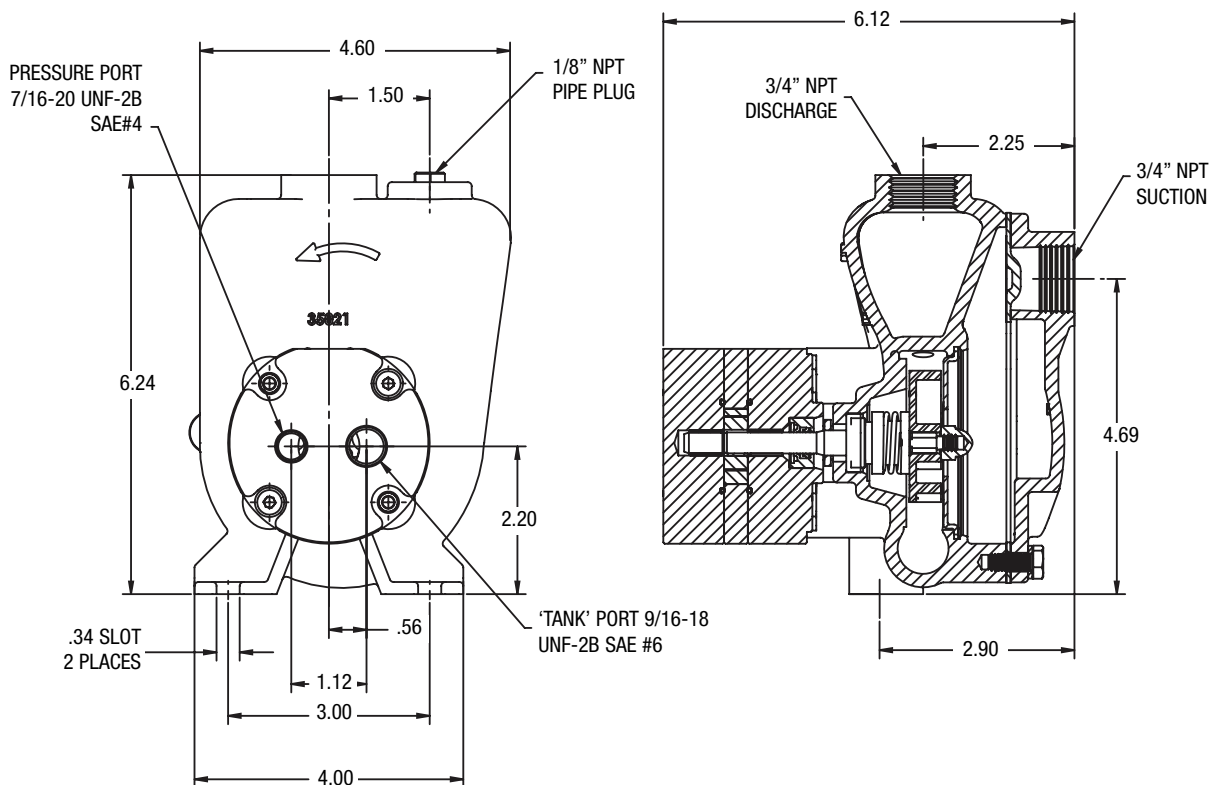
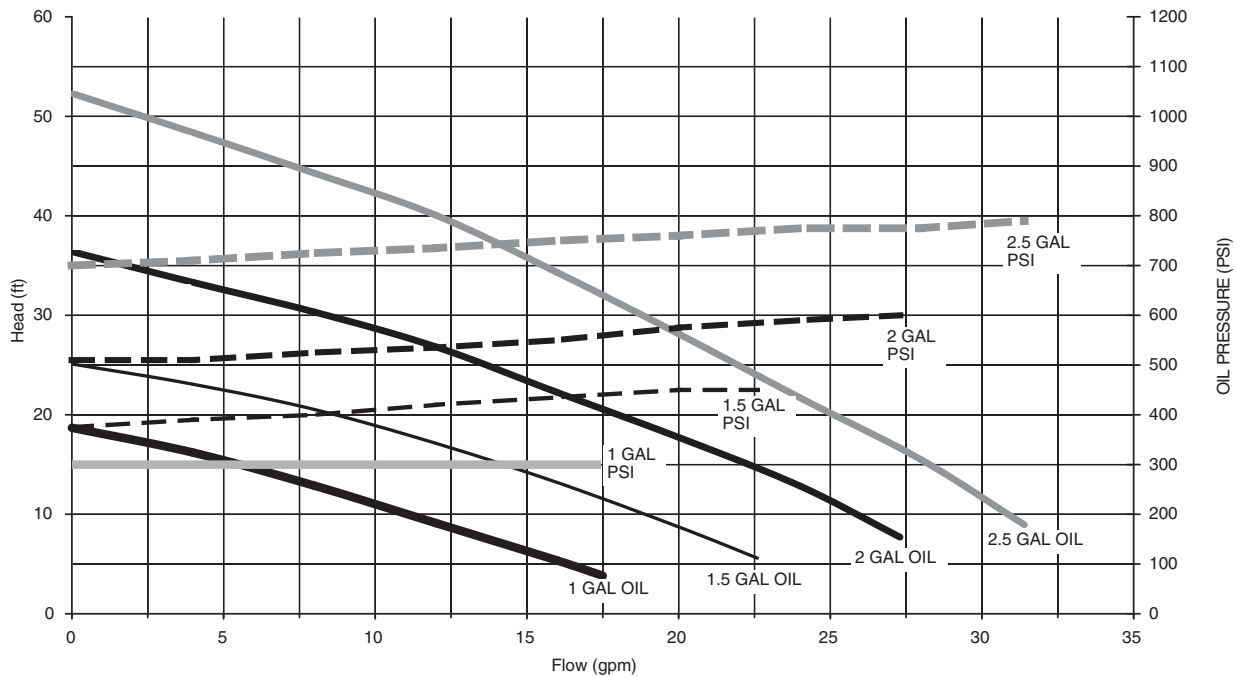
- 3/4" NPT
- 1/8" NPT Fill Port

Mechanical Seal

- Carbon/Ceramic/Viton

Hydraulic Motor Drive

Flow vs. Head/Pressure



34800 BENNETT • FRASER, MI 48026-1686
 (586) 293-8240 • FAX (586) 293-8469
 (800) 563-8006 • www.mppumps.com