



FRX 75 H

Centrifugal Pump

Model FRX 75 H is a high performance 316 stainless steel centrifugal pump. The pump is ideal for marine, agricultural, commercial or industrial transfer applications of compatible fluids.

The FRX 75 H model features all 316 stainless steel components for superior corrosion resistance when pumping chemical compounds. A carbon/ceramic/viton bellows shaft seal is standard. Ports are 1" hose connections. Marine ignition protected motors available. Pump can be rotated in 90° increments.



Application:

- Marine
- Industrial
- Commercial

Construction:

- 316 Stainless Steel Investment Cast

Maximum Working Pressure:

- 30 PSI (2.1 BAR)

Motor Options:

- AC
- DC

Port Sizes:

- 1" Hose Connections

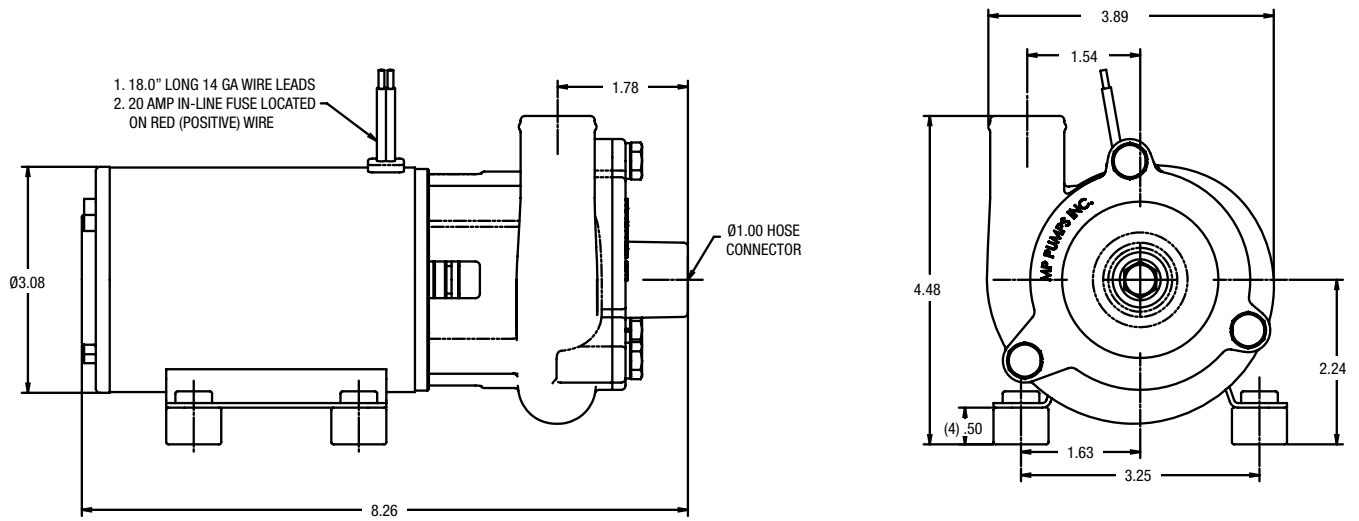
Seal:

- Carbon / Ceramic / Viton

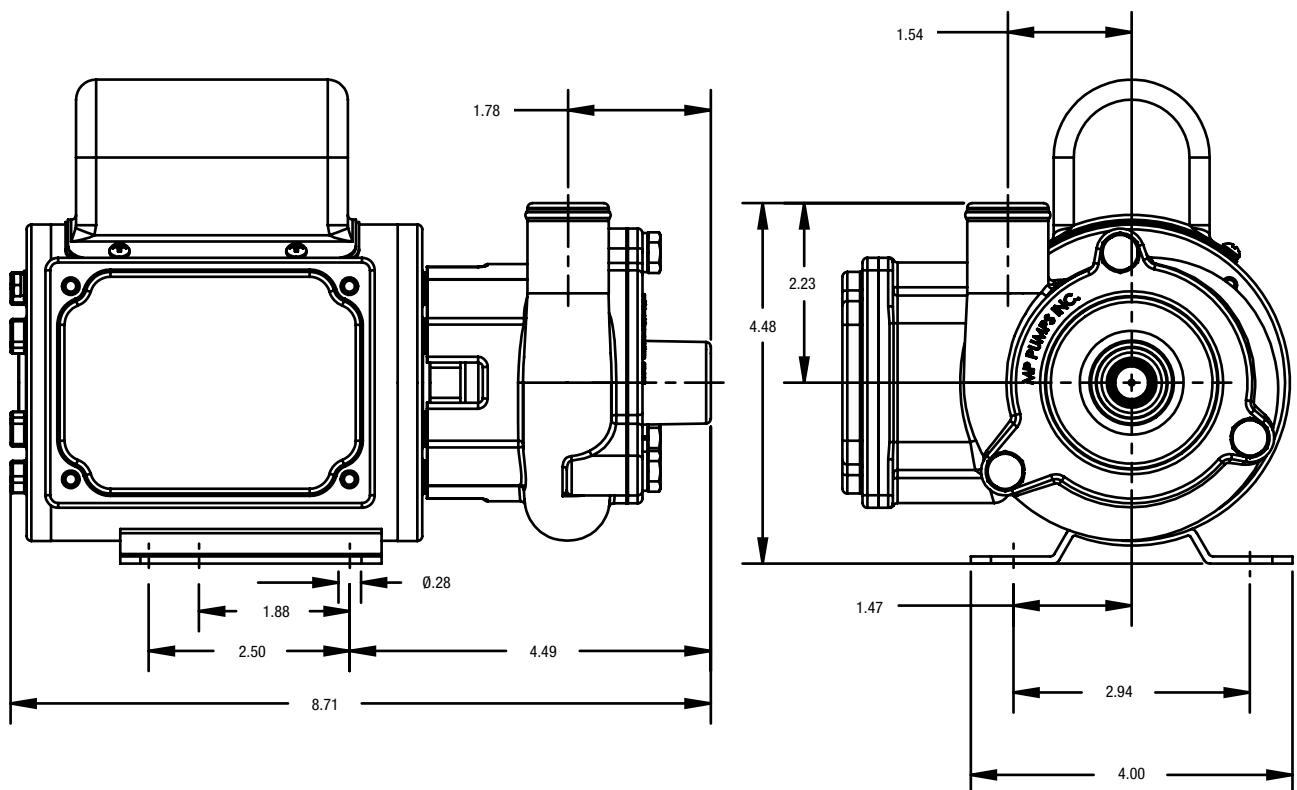
SPECIFICATIONS:

Housing	316 Stainless Steel (Investment Cast)
Cover.....	316 Stainless Steel (Investment Cast)
Impeller.....	316 Stainless Steel,Semi-Open (Sintered PM)
Mechanical Seal....	Carbon/Ceramic/Viton BellowsSpecial Seals Upon Request
O-ring.....	Viton
Motor.....	12VDC, 24VDC and 32VDC60HZ, Single Phase, 115VAC ODP and TENV60HZ, Single Phase, 230VAC TENV50HZ, Single Phase, 220VAC TENV
Weights	Pump W/AC Motor 15 lbs.Pump W/DC Motor 9.5 lbs.

FRX 75 H 12 or 24V Dimensions



FRX 75 H 115V Dimensions

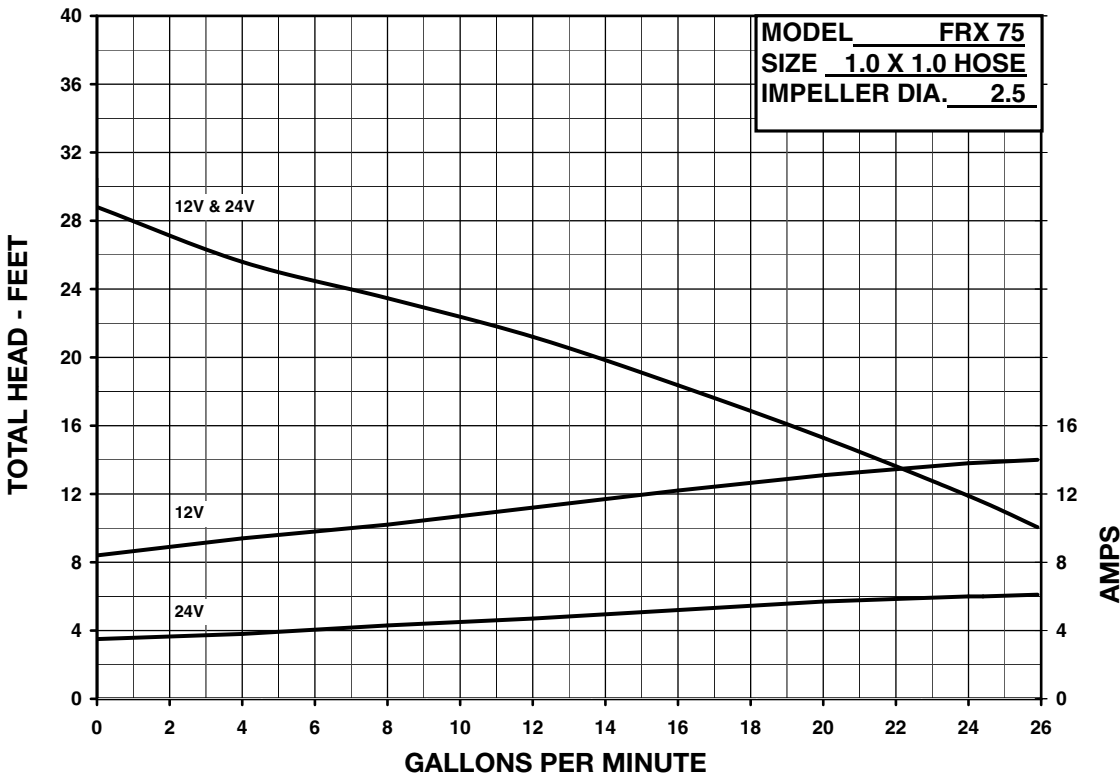


FRX 75 H 12 or 24V Performance Curves

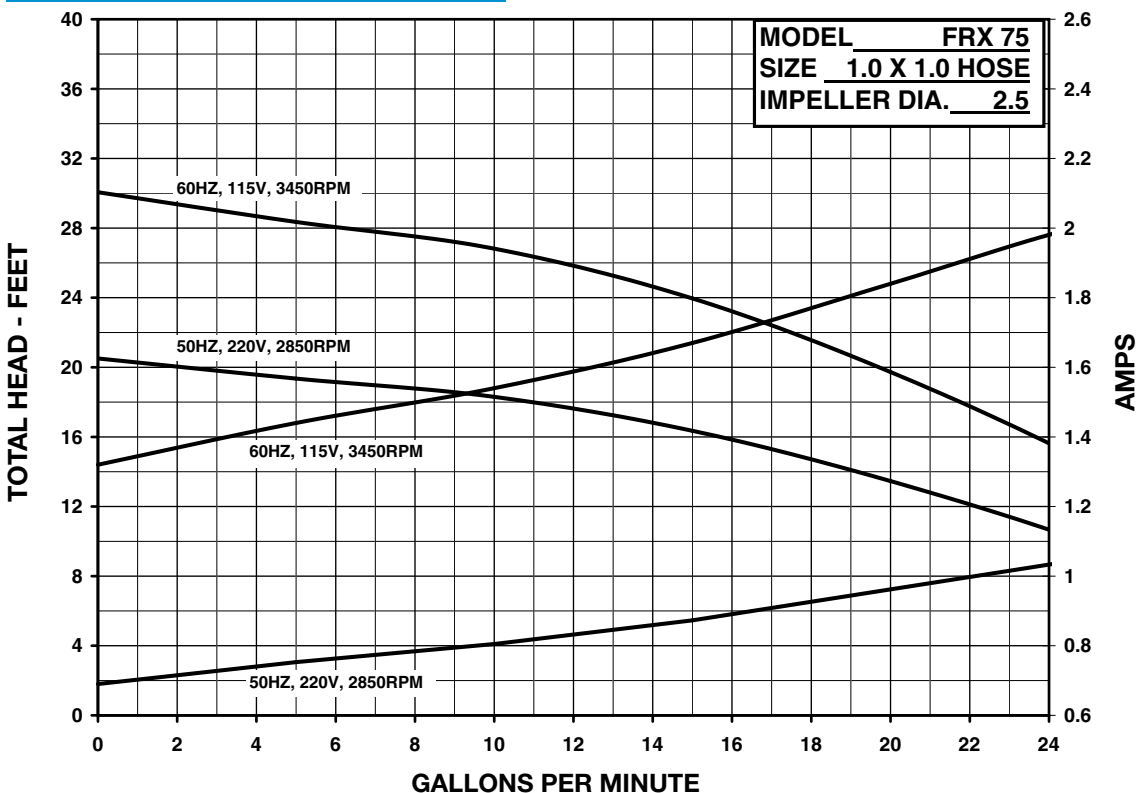
12VDC MOTOR

FOR 24VDC MOTOR

DIVIDE AMPS BY TWO



FRX 75 H 115V Performance Curves



34800 BENNETT • FRASER, MI 48026-1686
 (586) 293-8240 • FAX (586) 293-8469
 (800) 563-8006 • www.mppumps.com